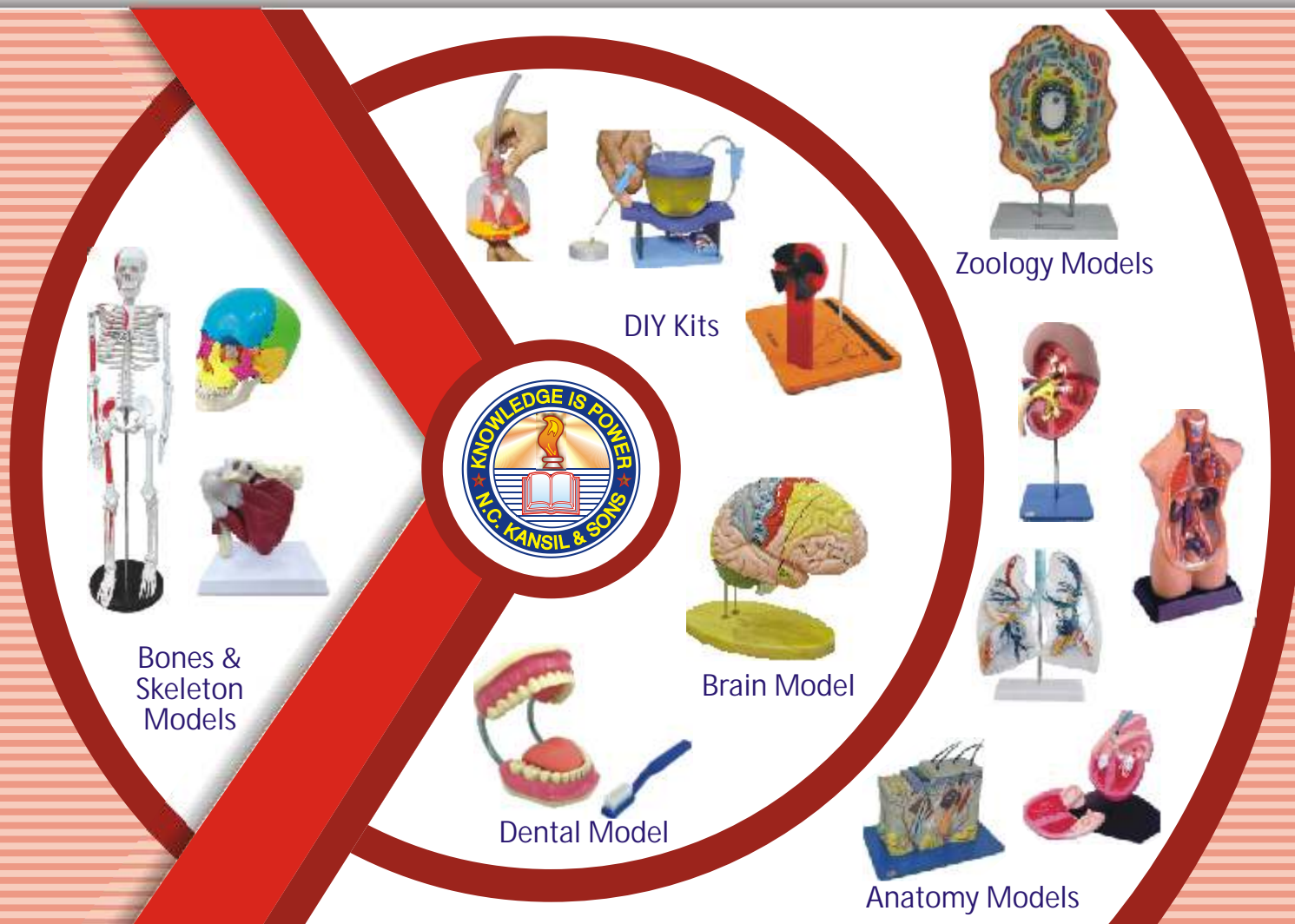


KANSIL'S

SCIENCE CATALOGUE

August
2022

MOST MODERN & INDISPENSABLE TEACHING LEARNING MATERIAL
FOR PHYSICS, CHEMISTRY, BOTANY, ZOOLOGY



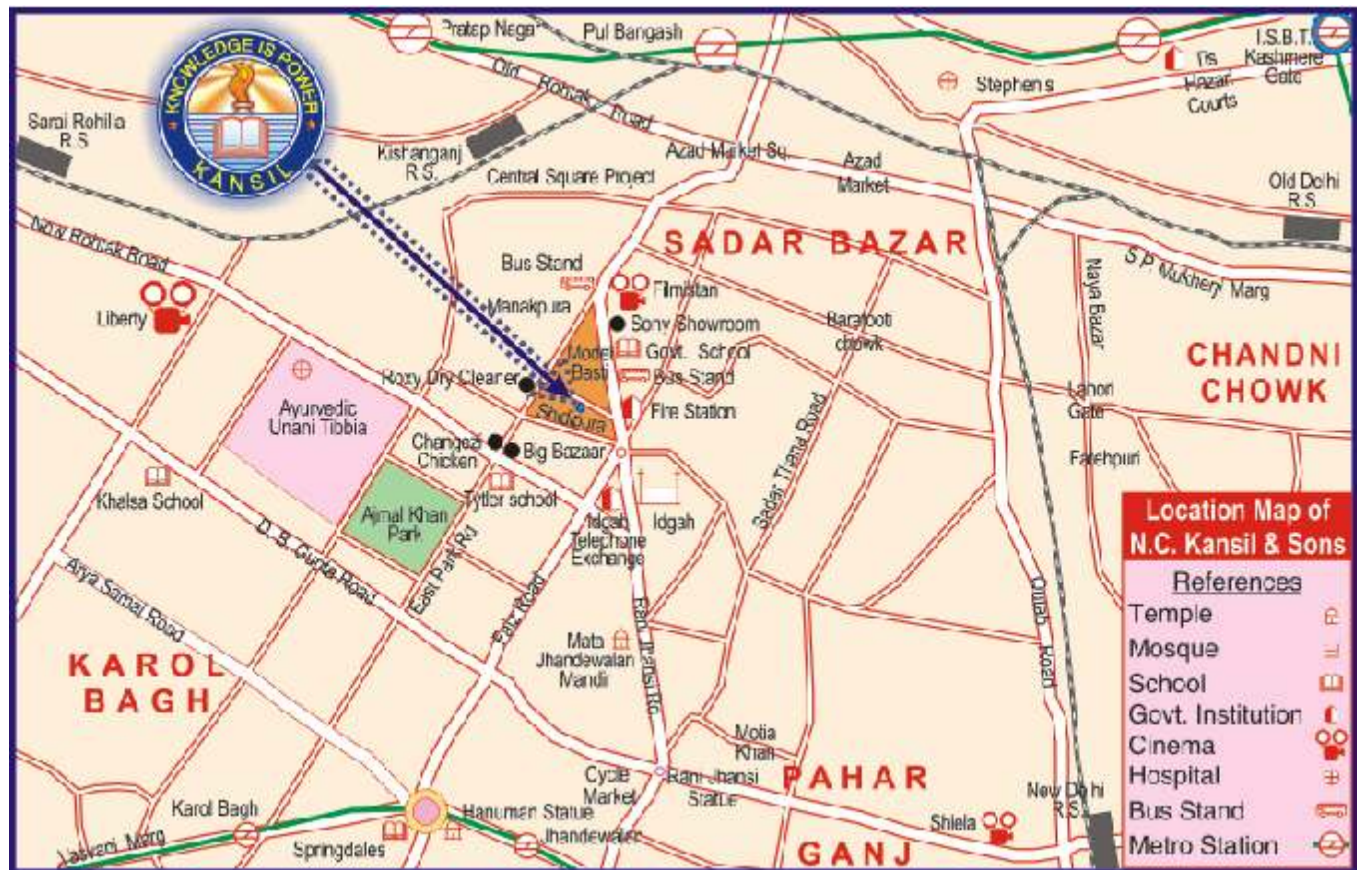
Dear Patron,

We present our new Science Catalogue for August, 2022 with great pleasure and confidence. Our products and variety is far superior and effective than those of others.

This year we have added many models in our **Zx** range of models. Please note we are owners of **Zx** range of models & **Zx** is our Trademark. Many new models have been introduced this year. Kindly scroll through the catalogue and look for **NEW** symbol to know about new products.

We have learnt from the feedback that someone has duplicated our Community Health and Environmental Sanitation Models. We suggest you to kindly look for **Zx** logo & our company hologram on the products before making purchases.

We welcome your advice and cooperation in further expanding the range of our products. We are sure that all the articles will be very useful for your Institution. Thanking you and assuring you of our best services.



CONTENTS

ITEM	Page
SCIENCE SECTION	1-18
Science & Technology Charts	1-7
Botany Charts	1-2
Zoology Charts	2-3
Chemistry Charts	3-5
Physics Charts	5-6
General Charts	7
Genetics And Evolution Charts, AIDS Charts	8
Periodic Table Chart, Lab Display Charts, Lab Safety Charts	9
Food And Nutrition Charts	10
Disaster Management, Environmental Science Charts, Life Sketch of Scientists	11
Biology Models (Models on Botany, Flowers)	12
Zoology Models	13
Models on Human Anatomy	14-15
Photos of Great Personalities (Great Scientists), Lab Safety Photos	16-17
Gems of Psychology, Famous Personalities in Computer Science	18
HEALTH & HYGIENE SECTION	19-23
Health Care Series, Prevent The Diseases	19
Human Physiology Charts Laminated	20
Human Physiology Charts Synthetic	21
First Aid Charts, Some Special Charts on First Aid	22
Yogasan Charts, Map Stands	23
ANATOMICAL MODELS	24-40
Bones, Skeleton, Spine, Skull, Joints, Pelvis & Joint Section Models	24-30
Human Torso Models	30-31
Digestive System	32-33
Heart & Circulatory System	33-34
Eye	34
Respiratory System	35-36
Skin & Ear	36
Reproductive System	37
Excretory System	38
Brain & Nervous System	39
CPR Manikins, Gynae & Obstetric Models	40
Dental Models, Build Your Anatomy Models	41
HISTOLOGY BIOMOLECULES	42-43
Muscle (Smooth, Cardiac, Skeletal) Fibre Models, DNA Model	42
Chloroplast, Mitochondria, Bacterium, Virus (Aids, Rabies, Influenza), Animal Cell	43
SCIENCE KITS	44-46
Telescope & Binoculars, Rocket Models, Microscope Set	44
Science Teaching Kits, Community Health Models	44-46
WORKING MODELS	47-52
Physics Working Models	47-50
Fun Science Kit	50
Chemistry Working Models	51
Biology Working Models, Robotics Working Models	52
VISUAL TEACHING AIDS	53
Overhead Projector, Slide Projector, OHP Transparencies, Slides	53
VIDEO CDs	54
Indian School Syllabus on Video CDs (Biology, Physics, Chemistry)	54

Some Tips to Study the Catalogue

Welcome! - You are about to enter the wonderfully exciting world of Teaching Aids. In the following pages of this catalogue you will come to know the products manufactured and marketed by us. Before you start browsing through them we give below some tips that will help you to study it better and effectively.

1. All the articles are manufactured in very heavy quantity by using very costly designs, dies and patterns. As such the size and description cannot be changed or altered at will. Please prepare your requirements according to the material and size mentioned in the catalogue.
2. All the articles are properly coded. Please mention the code and language.
3. The illustrations of charts are very selective. Each and every chart cannot be displayed in the catalogue. As such while placing an order please consult the detailed list mentioned therein.
4. The panorama of the Teaching Learning Material has been very well arranged subjectwise and where ever necessary we have given cross references.
5. It may be stated that the division of the catalogue i.e. Science, Social Studies, Maths is just for the sake of convenience. You may place your requirements with us all in one lot.

PLEASE NOTE

1. Customers' full satisfaction is our business policy. We are fully confident of the high standard and quality of our products.
2. To avoid delay in the execution of your order, please be careful as to mention:
 - a. The code, size & language of the map, chart, model or globe required by you.
 - b. Your complete address with pincode and telephone number.
3. The prices mentioned are nett Ex-godown including GST. Packing, Forwarding & Transportation charges extra. Please note that these prices are not M.R.P.
4. Please mention very clearly your exact requirements mentioning either the cost or our catalogue page No. and item code No. This will help us in processing your indents at a faster speed.
5. Images shown in the catalogue are for reference only. It may differ in colour or shade from actual product.
6. Please look for our Hologram to buy genuine products.
7. All disputes subject to Delhi Courts Jurisdiction only.

SCIENCE AND TECHNOLOGY CHARTS

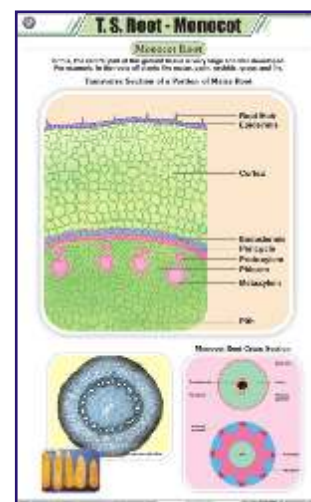
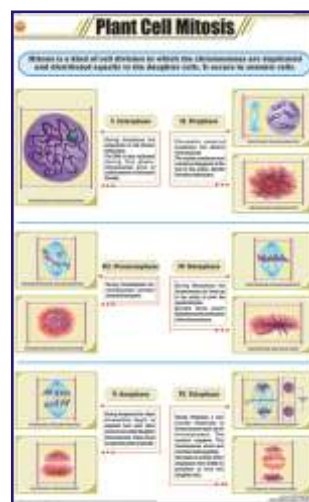
Size 58 × 90 cm (In English only)

The charts aim at familiarising students with the subject in a very realistic way and in social context. These delineate the process of life and of the technology that conditions our world today. The students will come to know the intricacies of the phenomenon and how it can be best used for the benefit of mankind. Using the latest printing technology the charts are printed on art paper in full colours and are duly laminated on both sides with thick plastic film and are fitted with plastic rollers.

BOTANY

- STB01 **Plant Kingdom** : Classification of plants, Cryptogamae, Phanerogame.
- STB02 **Typical Plant** : Non-flowering plants, Flowering plants.
- STB03 **Typical Plant Cell** : Structure.
- STB04 **Plant Cell Organelles** : Nucleus, Cell Wall, Cell membrane, Endoplasmic reticulum, Mitochondria, Golgi bodies, Plastids, Chloroplast.
- STB05 **Plant Tissues** : Meristematic, Permanent.
- STB06 **Plant Cell Mitosis** : Cell division in plant somatic cells.
- STB07 **Plant Cell Meiosis** : Reductional cell division in plants.
- STB08 **T.S. Stem - Monocot** : Maize stem.
- STB09 **T.S. Dicot Stem (Sunflower)** : T.S. stem of *Helianthus annuus*.
- STB10 **T.S. Root - Monocot** : Maize root.
- STB11 **T.S. of Dicot Root** : Gram root.
- STB12 **T.S. Leaf - Monocot** : Maize, Boutelova (C4 grass), *Poa annua* (C3 grass).
- STB13 **T.S. Leaf - Dicot** : Mango (mesophytic), Waterlily (hydrophytic), Nerium oleander (xerophytic).
- STB14 **Types of Leaves** : Simple, Compound, Heterophyll, Phyllotaxy, Venation (parallel & reticulate).
- STB15 **Root Systems** : Tap, Fibrous, Adventitious.
- STB16 **Structure of Flower** : Parts, Symmetry & floral diagram Actinomorphic, Zygomorphic, Assymetrical, Position of floral organs.
- STB17 **Calyx and Corolla** : Calyx modifications, Shapes of corolla.
- STB18 **Inflorescences** : Racemose, Cymose.
- STB19 **Fruits** : Parts, Classification - simple, Aggregate, Composite.
- STB20 **The Seed : Structure & Germination** : Dicot- exalbuminous & albuminous, Monocot exalbuminous & albuminous, Condition necessary for germination, Epigeal, Hypogeal.
- STB21 **Germination of Seed - Bean & Pea** : Hypogeal germination, Epigeal germination.
- STB22 **Dispersal of Fruits & Seeds** : Dispersal by - air, animals, water, explosion.
- STB23 **Photosynthesis** : Light reaction (Hill reaction), Dark reaction (Calvin Benson cycle), Requirements.
- STB24 **Plant Diseases** : Black rot, Late blight, Bacterial wilt, Smut, Brown spot, TMV, Brown rust, Yellow mosaic, Red rot, Bacterial blight, Powdery mildew, Leaf curl.
- STB25 **Reproduction in Plants** : Vegetative reproduction, Spore formation, Sexual reproduction of flowering plants.
- STB26 **Pollination** : Autogamy, Geitonogamy, Xenogamy, Anemophily, Hydrophily, Biotic (zoophily).
- STB27 **Double Fertilization** : Megasporogenesis, Microsporogenesis.
- STB28 **Artificial Vegetative Propagation** : Tissue culture, Cutting, Layering, Grafting.
- STB29 **Stem Modifications** : Underground modification, Subaerial modification, Aerial modification.
- STB30 **Root Modifications** : Modifications of tap root, Adventitious root and roots for support.
- STB31 **Hydrophytes** : External features & anatomical characters.
- STB32 **Mesophytes** : General description, external features & anatomical characters.

Each Rs. 200.00



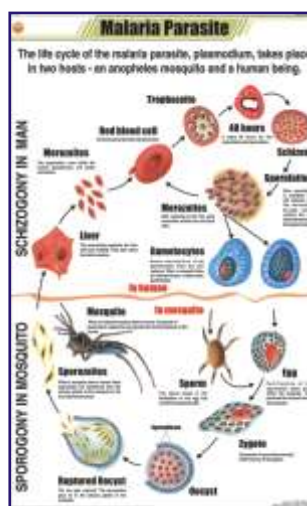
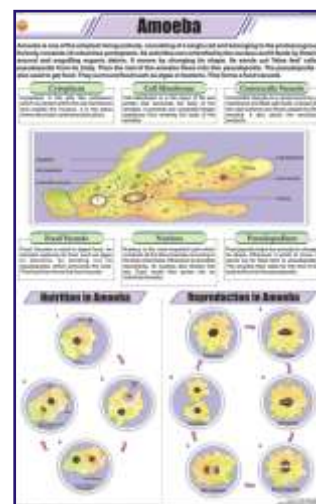
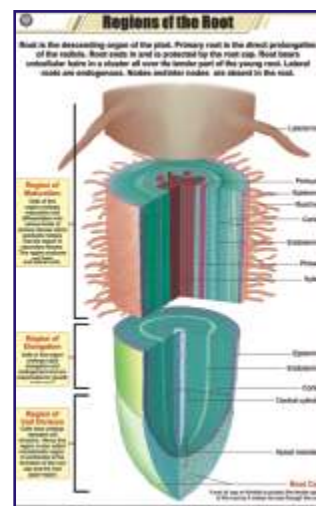
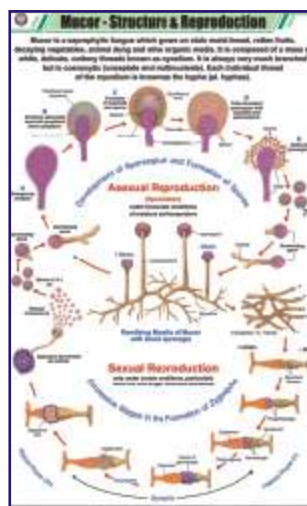
Size 58 × 90 cm (In English only)

BOTANY

- STB33 **Xerophytes** : External features & anatomical characters.
 STB34 **Insectivorous Plants** : Sundew (drosera), Venus fly-trap (dionaea), Pitcher plant (nepenthes), Bladderwort (urticularia).
 STB35 **Fungi** : Classification, Symbiotic relationships, Economic importance, Harmful effects, Animal & plant fungal diseases.
 STB36 **Algae** : Classification, Uses, Harms.
 STB37 **Viruses** : Classification, Plant and animal viral diseases.
 STB38 **Bacteria** : Classification, Shape, Respiration, Chemical nature of cell wall, Growth & reproduction, Useful activities, Diseases.
 STB39 **Life Cycle of Fern** : Life cycle of pteridophyte (fern).
 STB40 **Life Cycle of Moss** : Life cycle of bryophyte (moss).
 STB41 **Spirogyra** : Structure, Reproduction (vegetative, asexual, sexual-lateral & scalariform conjugation, germination of zygospore).
 STB42 **Life Cycle of Mushroom** : Life cycle of fungi (mushroom).
 STB43 **Leaf Modification** : Tendrils, Spines, Thorns, Bracts, Flashy Leaves, Adhesive disc, Reproductive leaf, Phyllode, Insectivory.
 STB44 **Parasitic Plants** : Holoparasites - rafflesia, Ivy broomrape, cuscuta, Hemiparasites - Indian paintbrush, mistletoe, owl's clover.
 STB45 **Mucor** : Structure & reproduction of common mold.
 STB46 **Regions of Root** : Region of maturation, Elongation and cell division.
 STB47 **Vascular Bundle** : Xylem & Phloem tissues.
 STB48 **Secondary Growth** : Stage of Secondary growth, Annual (growth) rings. Each Rs. 200.00

ZOOLOGY

- STZ01 **Animal Kingdom** : Classification in several phylum, Classification of sub-phylum vertebrata into different classes.
 STZ02 **Animal Cell** : Structure.
 STZ03 **Animal Cell Organelles** : Nucleus, Nuclear membrane, Cell membrane, Golgi bodies, Centriole, Ribosomes, Endoplasmic reticulum, Cilium, Flagellum, Mitochondria, Lysosome, Peroxisome.
 STZ04 **Animal Tissues** : Epithelial, Connective, Muscular, Nervous.
 STZ05 **Animal Cell Mitosis** : Cell division in animal somatic cells.
 STZ06 **Animal Cell Meiosis** : Reductional cell division.
 STZ07 **Gametogenesis in Animals** : Oogenesis, Spermatogenesis.
 STZ08 **Fertilization in Animals** : Structure of sperm & ovum, Fertilization process.
 STZ09 **Protozoa** : Classification into 4 classes- Rhizopoda (amoeba), Mastigophora (euglena, giardia), Ciliophora (paramecium), Sporozoa (plasmodium vivax).
 STZ10 **Amoeba** : Structure, Nutrition and reproduction.
 STZ11 **Malaria Parasite** : Life cycle of malaria parasite - plasmodium vivax.
 STZ12 **Paramecium** : Structure, Nutrition, Locomotion and reproduction.
 STZ13 **Hydra** : Structure, LS of body wall, Nematocyst, Reproduction & developmental stages.
 STZ14 **Liver Fluke** : Structure and life cycle of opisthorchis sinensis.
 STZ15 **Tapeworm** : Morphology, Anatomy and general characteristics of Taenia Solium.
 STZ16 **Roundworm (Ascaris)** : Structure, Systems.
 STZ17 **Hookworm** : Structure, Life cycle.
 STZ18 **Life History of Mosquito** : Stages of life cycle of mosquito.
 STZ19 **Life Cycle of Butterfly** : Metamorphosis of a monarch butterfly.
 STZ20 **Life History of Housefly**
 STZ21 **Life History of frog**
 STZ22 **Human Blood** : Functions, Components, RBC structure, Blood group, Blood clotting.
 STZ23 **Body's Defense** : Types of Leucocytes, Vaccination, Structure of antibody, Acquired Immunity.
 STZ24 **Harmful Insects**
 STZ25 **Beneficial Insects**
 STZ26 **Food Habits of Birds** Each Rs. 200.00

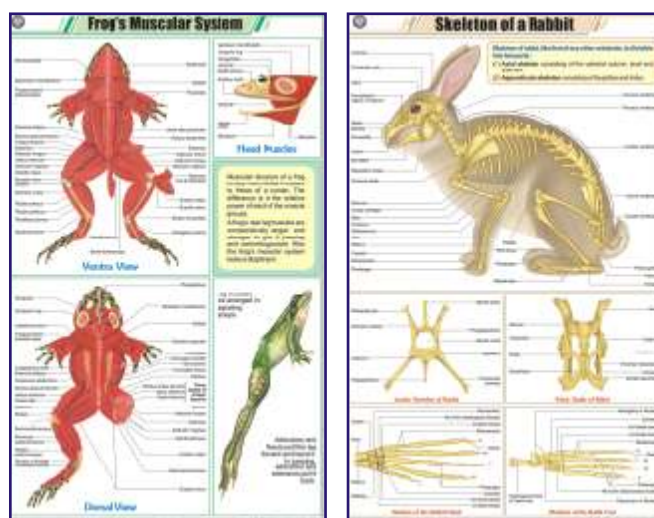


Size 58 × 90 cm (In English only)

ZOOLOGY

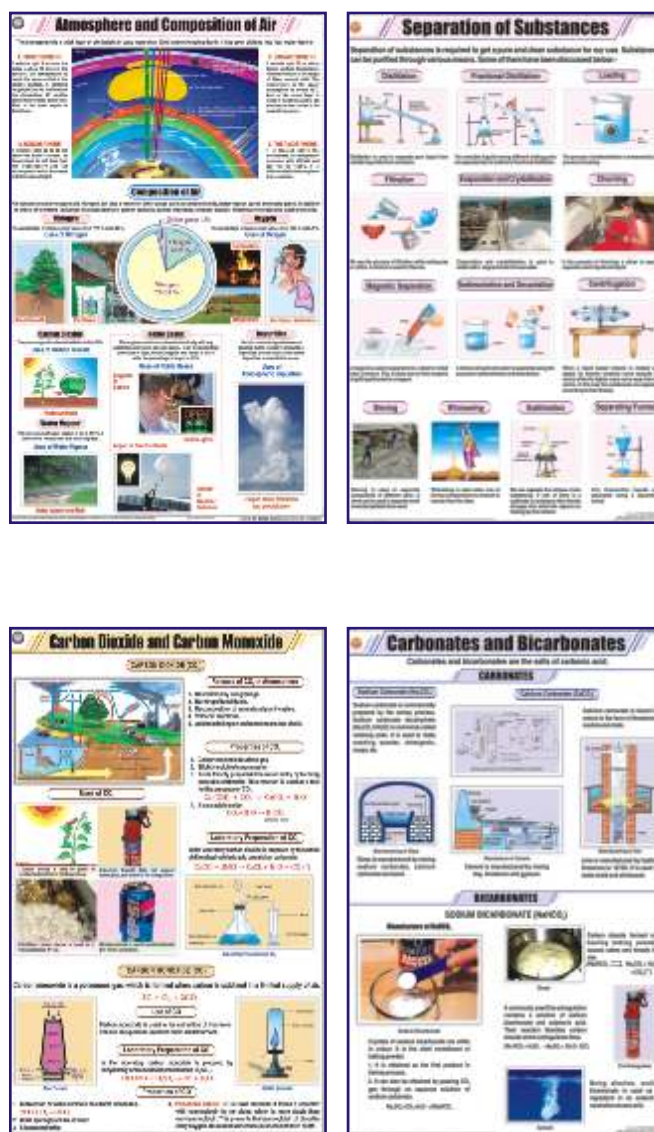
- STZ27 **Fish Anatomy** : Bony fish-general anatomy & skeletal system, Cartilaginous fish-general anatomy, Gill structure.
- STZ28 **Birth of a Bird's Chick** : Development of chick from egg.
- STZ29 **Earthworm I** : Ext. Morphology & Reproduction.
- STZ30 **Earthworm II** : Blood Circulation, Respiratory & Nervous system.
- STZ31 **Earthworm III** : Digestion, Skin & Excretion.
- STZ32 **Cockroach I** : Morphology & Reproduction.
- STZ33 **Cockroach II** : Blood Circulation, Respiratory & Nervous system.
- STZ34 **Cockroach III** : Digestion, Excretory, Skin & Muscles.
- STZ35 **Vertebrate Classes**
- STZ36 **Sense Organs** : Eye, Ear, Tongue, Skin, Nose.
- STZ37 **General Dissection of Rabbit** : Dissection of a mammal
- STZ38 **Neuron** : Structure, Synapse, Bipolar N., Unipolar N., Multipolar N.
- STZ39 **Early Development of the Frog** : 2/4/8 cell stage, blastula, gastrula, embryo.
- STZ40 **Frog's Morphology & Internal Structure**
- STZ41 **Frog's Urogenital System** : Male & Female urogenital system.
- STZ42 **Frog's Circulatory System** : Frog's heart (Bullfrog).
- STZ43 **Frog's Nervous System** : Central/Peripheral/Autonomic nervous system, Brain of frog.
- STZ44 **Frog's Muscular System**
- STZ45 **Life Cycle of Cockroach** : Stages from Ootheca to hatching to nymph to adult.
- STZ46 **Skeleton of a Bird** : Skeleton of pigeon, Anatomy of flying, Pneumatic bone of bird.
- STZ47 **Skeleton of Rabbit** : Axial & appendicular skeleton of rabbit.

Each Rs. 200.00

**CHEMISTRY**

- STC01 **Atom And Atomic Structure** : JJ Thompson discharge tube experiment, Rutherford's gold leaf experiment, Chadwick, Goldstein, Rutherford & Bohr's contribution.
- STC02 **Chemical Reactivity of an Element** : Reactivity series of metals.
- STC03 **Chemical Reaction & its Characteristics**
- STC04 **Classification of Chemical Reactions** : Combination reaction, Decomposition reaction, Displacement reaction, Double displacement reaction, Redox reaction, Exothermic - endothermic reaction, Photochemical reaction.
- STC05 **Valencies of Elements** : Name, symbol & valencies of natural occurring elements.
- STC06 **Chemical Bonding** : Covalent bonding (polar & non-polar), Ionic bonding, Metallic bonding, Hydrogen bonding.
- STC07 **Combustion** : Types of combustion - rapid, slow, explosion, complete, incomplete, ignition temperature.
- STC08 **Separation of Substances** : Distillation, Fractional distillation, Loading, Filtration, Churning, Evaporation & crystallisation, Magnetic separation, Sedimentation & decantation, Centrifugation, Sieving, Winnowing, Sublimation, Separating funnel.
- STC09 **Atmosphere and Composition of Air** : Layers of atmosphere, Composition of air.
- STC10 **Occurrence and Forms of Carbon**
- STC11 **Carbon dioxide and Carbon Monoxide**
- STC12 **Carbonates and Bicarbonates** : Sodium carbonate, Calcium carbonate, Sodium bicarbonate.
- STC13 **Sulphur** : Extraction, Structure, Types, Effects of heat, Vulcanisation.
- STC14 **Mole Concept** : Avagadro number, Avogadro's hypothesis.
- STC15 **Composition of Water by Weight** : Berzelius, Dulong & Dumas method, Morley's method, Proust's law.

Each Rs. 200.00



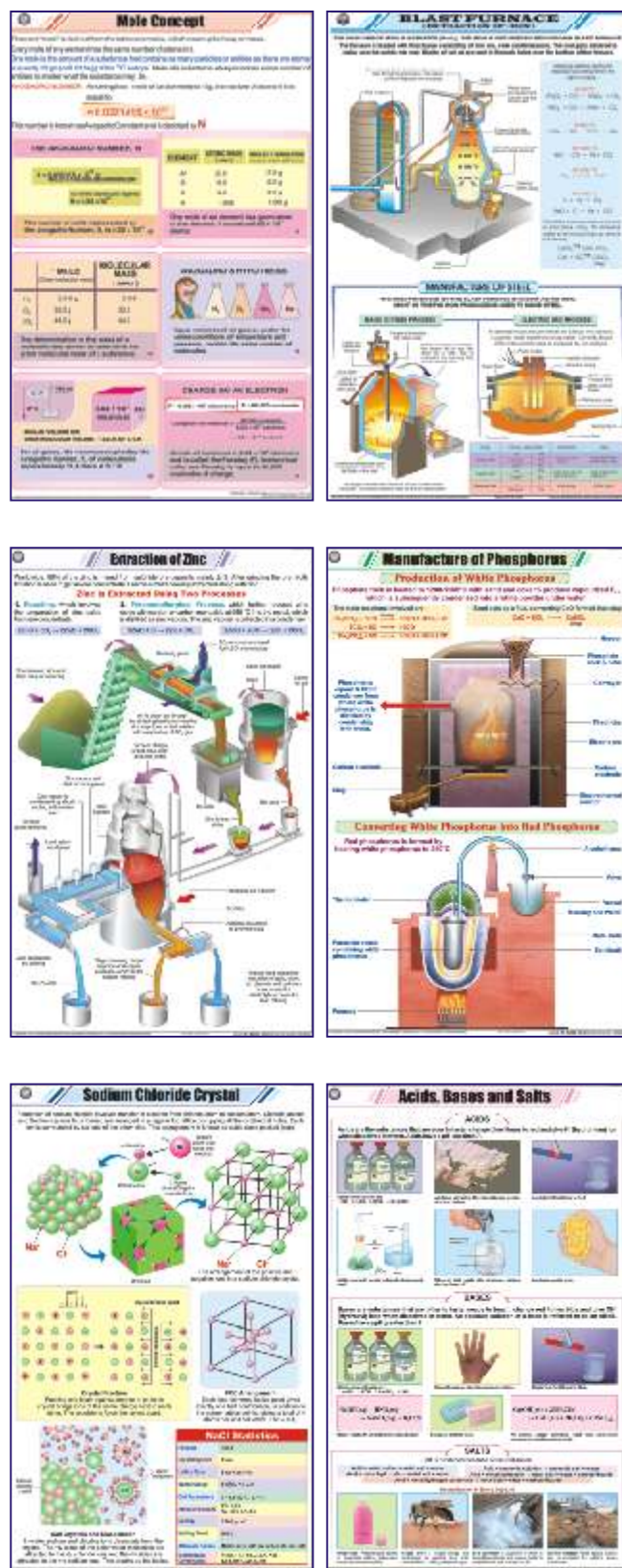
Illustrations are selective. For orders refer the list above.

Size 58 × 90 cm (In English only)

CHEMISTRY

- STC16 **Different Kinds of Cells** : Galvanic cell, Dry cell, Car battery, Rechargeable cell, Sodium sulphur battery, Solar cell, Fuel cell, Mercury zinc button cell.
- STC17 **Electroplating & Corrosion** : Silver/Gold electroplating, Mechanism of rusting.
- STC18 **Cement and Concrete** : Portland cement, Structure of concrete, Types of reinforced concrete foundations, Applications.
- STC19 **Manufacture of Glass** : Soda lime silica glass, glass moulding.
- STC20 **Alkanes** : General formula, Nomenclature, Applications, Methane molecule.
- STC21 **Alkenes** : General formula, Functional group, Structure and IUPAC names, Preparation, Applications.
- STC22 **Alkynes** : General formula, Functional group, Nomenclature, Structure & IUPAC names, Preparation, Applications.
- STC23 **Alcohols** : General formula, Functional group, Nomenclature, IUPAC names & structure, Preparation, Uses of ethanol.
- STC24 **Esters** : General formula, Nomenclature, Common esters, Preparation, Application.
- STC25 **Organic Acids** : Functional group, Common organic acids, Applications.
- STC26 **Soaps and Detergents** : Structure, Cleansing action, Problem with hard water.
- STC27 **Plastics** : Thermoplastics - PVC & polythene, Thermosetting - bakelite & melamine.
- STC28 **Synthetic Fibres** : Rayon, Polyester, Nylon, Acrylic.
- STC29 **Extraction of Iron (Blast Furnace)** : Reduction of iron ore in furnace, Manufacture of steel-basie oxygen process & electric arc process.
- STC30 **Aluminium Metallurgy** : Bayer's process, Hall-Heroult process.
- STC31 **Copper Metallurgy** : Important ores, Extraction process, Electrolysis, Uses.
- STC32 **Extraction of Zinc** : Roasting, Pyrometallurgical Process.
- STC33 **Prep. of Sodium Hydroxide & Sodium Carbonate** : Castner cell, Solvay process.
- STC34 **Prep. of Nitrogen and Nitric acid** : Laboratory prep. of nitrogen & nitric acid, Cryogenic distillation, Ostwald's process.
- STC35 **Prep. of Chlorine and Hydrochloric acid**
- STC36 **Prep. of Sulphur Dioxide & Sulphuric acid** : Contact process.
- STC37 **Prep. of Ammonia and Haber Process**
- STC38 **Prep. of Oxygen and Liquefaction of Air** : Manufacture of O_2 by heating, electrolysis of water, liquefaction of air.
- STC39 **Prep. of H_2 & CO_2** : Lab preparation of hydrogen and carbon dioxide, Steam re-forming of natural gas.
- STC40 **Manufacture of Bleaching Powder** : Hasenclever plant, Bachmann's plant.
- STC41 **Manufacture of Phosphorus** : Manufacture of while phosphorus and red phosphorus.
- STC42 **Crystal Lattices** : Various crystal system, their unit cells, variations & examples.
- STC43 **Close Packed Structures** : Close packing in 2D & 3D, voids.
- STC44 **Sodium Chloride Crystal** : Formation of NaCl crystal, Crystal fracture, FCC arrangement, Dissociation.
- STC45 **Acids, Bases and Salts** : Properties & characteristics of acids, bases and salts.
- STC46 **Electrolysis** : Electrolysis of molten NaCl, Faraday's laws of electrolysis, Refining, Electroplating.
- STC47 **Atoms and Molecules** : Atomic No, Mass No, Istopes, Isobars, Isotones, Molecules, Chemical formula.
- STC48 **Solids, Liquids & Gases** : Forms of matter, Change of state.

Each Rs. 200.00



Size 58 × 90 cm (In English only)

CHEMISTRY

- STC49 Shapes of Atomic Orbitals** : Quantum numbers, Shapes of s, p, d & f orbitals.
- STC50 Chemical Equilibrium** : Law of chemical equilibrium, Chemical equilibrium constant, Factors affecting equilibrium. **NEW**
- STC51 Kinetic Theory** : Physical properties of matter at molecular level according to kinetic theory of gases. **NEW**
- STC52 Electronic Configuration** : Atomic no, Mass no, Electronic configuration of first 20 elements. **NEW** Each Rs. 200.00

PHYSICS

- STP01 Motion** : Linear motion - rectilinear, curvilinear; Rotational motion, Oscillatory motion, Periodic motion.
- STP02 Changes Around Us** : Slow-fast, Reversible - irreversible, Periodic - non-periodic, Desirable - non desirable, Physical - chemical changes.
- STP03 Metric Weights and Measures** : SI units & their multiples & submultiples.
- STP04 Measurements** : Standard systems, measuring methods.
- STP05 Sound** : What is sound?, Decibel scale of different sounds, Characteristics of sound, Sonic boom, Ultrasound & echo.
- STP06 Wave Motion** : Transverse wave, Longitudinal wave, examples.
- STP07 Simple Machine** : Lever, Pulley, Wedge, Inclined plane, Screw, Wheel & Axle.
- STP08 The Lever** : Lever of - first class, second class, third class.
- STP09 Principle of Archimedes**
- STP10 Pascal's Law** : Law & its applications, hydraulic press, braking system.
- STP11 Reflection of Light** : Laws of reflection, Image formation by plane & spherical mirrors.
- STP12 Refraction Through a Glass Slab** : Lateral displacement, Refractive index, Refraction through different mediums, Total internal reflection - looming & mirage.
- STP13 Refraction Through Prisms** : Dispersion, Refraction through equilateral prism, Re-combination of spectrum colours, Rainbow.
- STP14 Refraction of Light Through lenses** : Image formation by concave and convex lenses.
- STP15 Optical Instruments** : Slide projector, Binoculars, Telescope, Compound microscope, Magnifying glass camera, Periscope.
- STP16 Microscope** : Compound and Electron microscope, Ray diagram.
- STP17 Telescope** : Refracting telescope, Ray diagram of refracting & reflecting (cassegrain) telescope.
- STP18 Eye and its Defects** : TS of eyeball, Presbyopia, Cataract, Myopia (near sightedness), Hypermetropia (far sightedness), Astigmatism.
- STP19 Electric Current-Sources-Effects** : Sources - Voltaic cell, Daniel cell, Dry cell. Effects - Heating, Lighting, Chemical, Magnetic.
- STP20 Static Electricity** : Electrostatic induction, Lightning spark, Photocopier.
- STP21 Current Electricity** : Electric current, Conventional current, voltaic cell, Wiring of a plug, Transmission of electricity, Electric circuit inside a torch and a house.
- STP22 Ohm's Law & Electrical Resistance** : Ohm's law, Factors affecting resistance, Resistance of series and parallel combination.
- STP23 Electric Circuit's Components Symbols**
- STP24 Magnetism** : Earth's magnetic field, Magnetic compass, Types of magnets, Theory of magnetism, Van allen radiation belt.
- STP25 Properties of a Magnet, Making a Magnet** : Electromagnet, single/double touch method, solenoid, properties, storage & handing, magnetic induction, repulsion - test for magnetism.
- STP26 Electromagnetism** : Oersted's experiment, Magnetic field of a current carrying conductor maxwell's right hand grip rule, Fleming's left hand rule (motor effect), Applications. Each Rs. 200.00



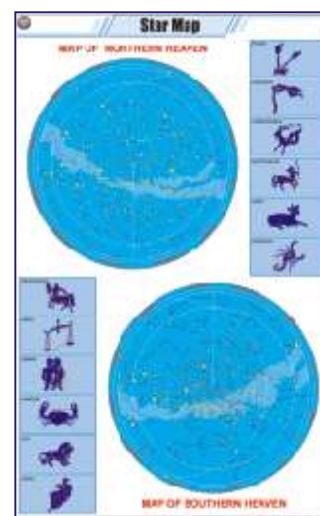
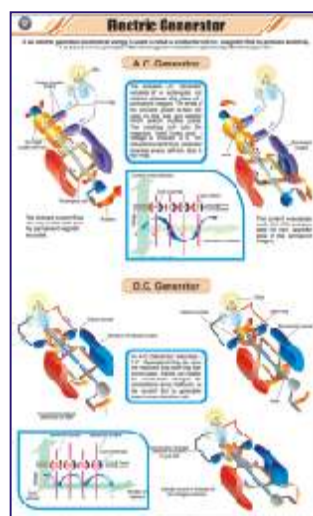
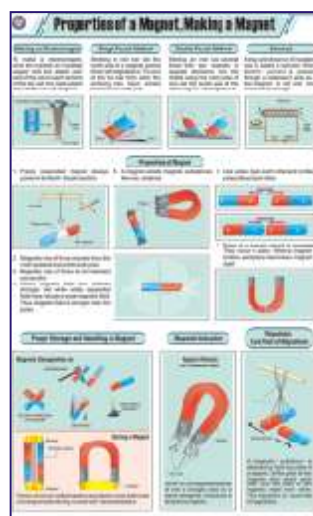
Illustrations are selective. For orders refer the list above.

Size 58 × 90 cm (In English only)

PHYSICS

- STP27 **Electromagnetic Induction** : Induction using bar magnet, Self-induction, Mutual induction, Fleming's right hand rule, Applications.
- STP28 **Electric Motor** : simple DC & AC motor, commercial electric motor, applications.
- STP29 **Electric Bell** : Working principle of an electric bell.
- STP30 **Electric Generator** : AC & DC generator.
- STP31 **Dynamo** : Dynamo principle, Bicycle bottle dynamo, Faraday's disc dynamo, Pixii's commutated DC dynamo.
- STP32 **Force** : Effects of force, Combining force.
- STP33 **Friction** : Static, kinetic & rolling friction. Advantages & disadvantages of friction, Methods of increasing or reducing friction.
- STP34 **Gravitation** : Universal law of gravitation, Gravitational constant G, Acceleration due to gravity, Weight, Weightlessness.
- STP35 **Moment and Couple** : Moment (Torque), Principle of moment, Couple & its applications.
- STP36 **Work and Power** : Work & power explained, special causes for work done.
- STP37 **Nuclear Fusion** : Proton-Proton chain, CNO cycle, Controlled fusion, Hydrogen bomb.
- STP38 **Nuclear Fission** : Chain reaction, Spontaneous fission, Controlled fission, Neutron induced fission, Breeding plutonium-239, Enrichment of nuclear fuel.
- STP39 **Nuclear Reactor** : Pressurized water reactor, Fast nuclear reactor.
- STP40 **Radioactivity** : Types of radioactive radiations, Penetrating power, Carbon dating, Decay of uranium-238.
- STP41 **Radio Telescope** : Radio telescope, Astronomical interferometers.
- STP42 **X-Ray** : Characteristics, production and uses of X-rays.
- STP43 **Television** : Picture tube, color triplets, transmission mechanism.
- STP44 **Multistage Rocket** : Stage principle, chemical rocket types, component of rocket system, engine operation.
- STP45 **Wind Mill** : Typical windmill, principle, horizontal & vertical axis wind turbine.
- STP46 **Petrol Engine** : Four stroke petrol engine and its working.
- STP47 **Steam Engine** : Simple steam engine working and principle.
- STP48 **Diode** : Types & symbols.
- STP49 **Universe I (Life Cycle of a Star)**
- STP50 **Universe II (Comets & Meteors)** : Structure of comet, Meteorite strike, Types of meteorites.
- STP51 **Star Map** : Star map of northern and southern heaven, 12 star constellation.
- STP52 **Newton's Laws of Motion** : Newton's first, Second & third law of motion.
- STP53 **Simple Electric Circuit** : Open & close circuit, Parallel circuit, Series circuit.
- STP54 **Measuring instruments** : Screw gauge, vernier caliper, cathode ray oscilloscope, spectrometer, calorimeter, voltmeter, ammeter, galvanometer. **NEW**
- STP55 **Energy** : Types of energies, law of conservation, mechanical energy - Kinetic energy & Potential Energy. **NEW**
- STP56 **Heat and temperature** : SI units, volumetric expansion, specific heat, latent heat, conduction, convection, radiation, temperature & thermal equilibrium, celsius, fahrenheit, kelvin scales. **NEW**
- STP57 **Different Types of Satellite** : Weather, communication, astronomical, remote sensing, earth observation, navigation, miniaturised satellites. **NEW**

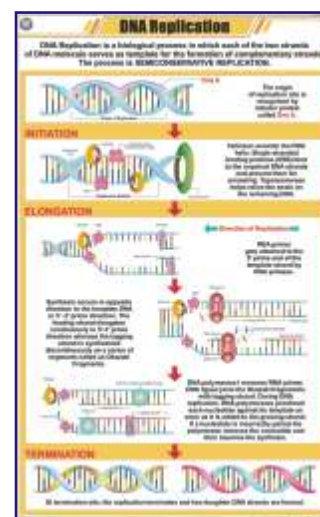
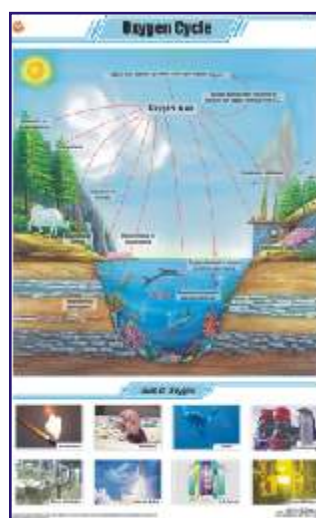
Each Rs. 200.00



Size 58 × 90 cm (In English only)

GENERAL

- STG01 **The Cell Theory** : Prokaryotic, Eukaryotic, Unicellular, Multicellular, Cell theory.
- STG02 **DNA** : Z DNA, B DNA, Double helix structure, Nucleotide.
- STG03 **RNA** : rRNA, mRNA, tRNA, Flow of genetic information, Virus structure.
- STG04 **Levels of Organization**
- STG05 **Origin of Life** : Miller and Urey experiment, Steps in origin of life, Coacervates.
- STG06 **Cellular Respiration (Kreb's Cycle)** : Glycolysis, Krebs TCA cycle, electron transport chain.
- STG07 **Animal Husbandry** : Breeding, Feeding, Weeding, Heeding.
- STG08 **Economic Plants**
- STG09 **Basic Agricultural Practices**
- STG10 **Medicinal Plants - I**
- STG11 **Medicinal Plants - II**
- STG12 **Energy Needs** : Hydro, Chemical, Solar, Wind, Bio, Magnetic, Nuclear, Sound & Light energy.
- STG13 **Fossil Fuels** : Types-solid, liquid, gaseous, calorific value, characteristics coal & petroleum, Fractional distillation.
- STG14 **Petroleum & Natural Gas** : Formation of petroleum, Oil drilling, Fractional distillation.
- STG15 **Renewable Sources of Energy**
- STG16 **Nuclear Energy** : Nuclear energy power plant, Fission, Fusion, Atomic bomb, Hydrogen bomb, Uses, Effects.
- STG17 **Bio-Gas** : Fixed dome type, Floating gas holder type.
- STG18 **Nitrogen Cycle**
- STG19 **Oxygen Cycle**
- STG20 **Carbon Cycle**
- STG21 **Fire & Fire Extinguishers** : Classification of fire, Uses of fire extinguisher, Types of fire extinguishers. Water- CO_2 type, Mechanical foam (AFFF) type, Dry chemical powder (DCP) type, Carbon dioxide type.
- STG22 **Soil- A natural Resource** : Uses, Soil erosion, Soil conservation, Soil pollution.
- STG23 **How Soil is formed and Soil Profile** : Agents of weathering, Layers of soil.
- STG24 **Types of Soils in India**
- STG25 **Food Chain in Forest Ecosystem** : Simple food chain, Food web.
- STG26 **Solar Cooker** : Solar cooker, - Box type, Parabolic type, Panel type.
- STG27 **Water Harvesting**
- STG28 **Purification of Water** : Boiling, Distillation, Filtration, Chlorination, Reverse osmosis, Domestic RO system.
- STG29 **Poultry** : Indegenious breeds, Exotic breeds, Equipments, Behaviour under brooders.
- STG30 **Sericulture (L.H. Silkworm)** : Stages of silk production, Life cycle of bombyx mori.
- STG31 **Apiculture (L.H. Honeybee)** : Queen honey bee, Artificial bee hive, Honey extractor & extraction.
- STG32 **Food Pyramid** : Food pyramid, Components, Balanced diet.
- STG33 **Microorganisms**
- STG34 **Mutation** : Insertion, Duplication, Deletion, Inversion, Translocation, Frameshift, Point mutation.
- STG35 **Enzymes** : Structure, Mechanism, Classification, Enzyme activity.
- STG36 **DNA Replication** : Initiation, Elongation, Termination.
- STG37 **Osmosis** : Molecular view, osmosis in isotonic, hypotonic and hypertonic solutions.
- STG38 **Evidence of the Evolution of Life** : Fossil record, anatomical comparison, comparative embryology.
- STG39 **Food Chain in Pond Ecosystem**
- STG40 **Food Chain in Desert Ecosystem**



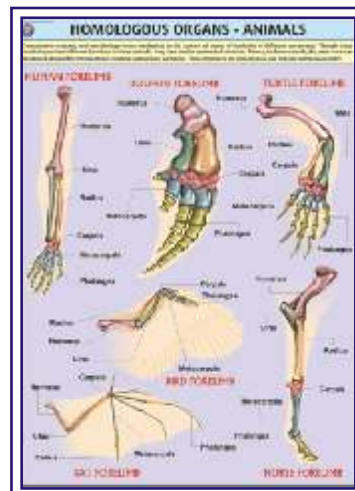
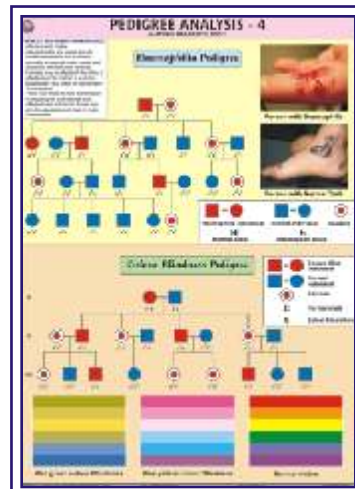
Each Rs. 200.00

These charts are highly illustrative.

GENETICS AND EVOLUTION CHARTS

Printed on Polyart Synthetic Paper. Size 70 x 100 cm. Price Rs. 250.00 Each

- GE01S Pedigree Analysis-1** : showing standard symbols used in Pedigree Analysis and Sample Pedigree.
- GE02S Pedigree Analysis-2** : showing Autosomal Dominant Trait Pedigree such as Myotonic Dystrophy and Tongue Curler Pedigree.
- GE03S Pedigree Analysis-3** : showing Autosomal Recessive Trait Pedigree such as Inheritance of Attached Ear Lobe and Inheritance of Sickle Cell Anaemia.
- GE04S Pedigree Analysis-4** : showing X-linked Recessive Trait Pedigree such as Haemophilia and Colour Blindness Pedigree.
- GE05S Pedigree Analysis-5** : showing X-linked Dominant Trait Pedigree such as Hypophosphatemia and Droopy Eyelids Pedigree.
- GE06S Pedigree Analysis-6** : showing Y-linked Trait - Hairy Ear and Mitochondrial Inheritance Pedigree.
- GE07S Homologous Organs - Animals**: showing Forelimbs of Bat, Turtle, Horse, Human, Bird and Dolphin demonstrating Homology.
- GE08S Analogous Organs - Animals**: showing Wings of Bird, Butterfly, Pterosaur and Bat demonstrating Analogy.
- GE09S Homologous Organs - Plants**: showing thorn of Bougainvillea, tendrils of Cucurbita, fleshy cylindrical stem of Euphorbia, fleshy flattened stem of Opuntia, leafy shoots of Chrysanthemum and pineapple representing Plant Homology.
- GE10S Analogous Organs - Plants**: showing thorn of Pyracantha, spine of Berberis vulgaris, prickles of Prosopis grandulosa and stipular spines of Black Locust representing Plant Analogy.
- GE11S Hybridisation-1 (Monohybrid Cross)** : Cross between Purple coloured and White coloured flower Pea Plant demonstrating inheritance of one dominant character and expression of recessive parental trait without blending in F₂ generation.
- GE12S Hybridisation-2 (Dihybrid Cross)** : Cross between Pea Plants differing in two traits (pod colour & plant height) showing segregation of one pair of character is independent of the other pair of characters.
- GE13S Hybridisation-3 (Incomplete Dominance)** : Cross between true breeding Red and White Snapdragon flower plants showing one character is not completely dominant over other.



CHARTS ON AIDS

Printed on Polyart Synthetic Paper. Size 70 x 100 cm. Price Rs. 250.00 Each

- AS01S HIV** : showing structure and mechanism of infection of Human Immunodeficiency Virus
- AS02S Transmission of HIV** : explaining different ways which can spread the HIV infection and cause AIDS.
- AS03S Prevention** : showing various measures which, when adopted, prevent transmission of HIV infection.
- AS04S How AIDS is not transmitted** : showing various routine tasks which are not involved in transmission of HIV.
- AS05S Progress of Infection** : showing how HIV infection typically progresses through various stages.
- AS06S Opportunistic Diseases** : depicting complications which an AIDS patient develops that otherwise wouldn't normally occur in a person with a healthy immune system.
- AS07S Sexually Transmitted Diseases** : showing various sexually transmitted diseases which increase the chances of acquiring HIV infection by an individual when exposed to the virus.
- HP26S Human Immune System** : showing different organs involved in a healthy immune mechanism. As AIDS progressively weakens the immune system, chart gives an outline of functions of Immune System to better understand what AIDS can do.



CHEMISTRY LAB DISPLAY CHARTS

PERIODIC CHART OF ELEMENTS



A Most detailed chart printed in multi colours showing Solids, Liquids and Gases in separate distinctive colours together with their Atomic Numbers, Density, Atomic Radius, Melting Point, Electronic Structure, Electro negativity, First Ionization Energy, Oxidation State and Crystal structure.



PT01	Size 140 × 100 cm Laminated	Rs. 420.00
PT02	Size 100 × 70 cm Laminated	Rs. 180.00
PT03S	Size 100 × 70 cm Synthetic	Rs. 250.00
PT04	Size 50 × 35 cm Paper	Rs. 13.50
PT05	Size 50 × 35 cm Laminated w/o rollers	Rs. 37.00
PT06	Size 100 × 75 cm Paper folded in Book form	Rs. 50.00
PT07S	Size 100 x 70 cm Mendeleev's Periodic Chart Synthetic	Rs. 250.00
PT08	Size 90 × 55 cm Laminated	Rs. 190.00

PT09 Size 96 x 70 cm Periodic Chart
Elementary RS. 190.00

FOR 3-D INTERACTIVE PERIODIC TABLE

Please see page S-52



LABORATORY SAFETY

Price Rs. 250.00

Showing basic safety measures to be followed while working in a chemistry laboratory. Printed on Polyart Synthetic Paper.

Size 70 x 100 cm.

Code CL01S



LABORATORY TECHNIQUES

Price Rs. 250.00

Showing various procedures and techniques generally used in a chemistry laboratory. Printed on Polyart Synthetic Paper.

Size 70 x 100 cm.

Code CL02S



pH COLOUR CHART

Price Rs. 250.00

Reference colours indicated by universal indicator with different acidic or basic substances to show their approximate ph values. Printed on Polyart Synthetic Paper. Size 70 x 100 cm.

Code CL03S



LABORATORY FIRST AID

Price Rs. 250.00

Showing various first aid techniques and procedures used during an accident in a Laboratory. Printed on Polyart Synthetic Paper.

Size 70 x 100 cm.

Code CL04S

LAB SAFETY CHARTS

Size 30 × 45 cm, Printed on 300 gsm art paper & lamination on both sides.

LSC01	Protect yourself, Dress appropriately	LSC07	Never suck liquid chemicals by mouth, Use a pipette bulb
LSC02	Always wash your hands before and after the experiment	LSC08	Beware! Hot & cold look a like
LSC03	Keep the testing area and vessels clean before & after the experiment	LSC09	Never touch or taste chemicals
LSC04	Never eat or drink while performing experiments	LSC10	Always experiment under supervision, Inform supervisor in case of accident
LSC05	Avoid using glassware that is cracked or chipped	LSC11	Act responsibly, Don't fool around in the laboratory
LSC06	Keep your face away from reaction vessels	LSC12	Always keep the fire extinguisher & first aid box within reach

LSC_12 complete set of above 12 charts

Price Rs. 756.00 per set of 12



Laminated with thick plastic film on both sides & fitted with superior plastic rollers.

CHARTS ON FOOD AND NUTRITION

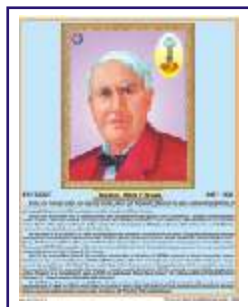
Size 70 x 100 cm. English & Hindi combined. Laminated Each Rs. 200.00

- FN01 OUR FOOD** : Chart shows various components and functions of food. It also illustrates food pyramid mentioning balance diet and daily requirement of nutrients by different age groups.
- FN02 PROTEINS** : Chart shows both animal and plant sources of protein. It also explains various functions performed by proteins in our body and some special conditions of high protein needs.
- FN03 FATS** : Chart shows a brief classification of fats with a mention of essential fatty acids. It also shows some of the important functions and sources of fats.
- FN04 CARBOHYDRATES** : Chart shows classification of carbohydrates as simple and complex with their various functions in the body. It also shows various foods rich in carbohydrates.
- FN05 VITAMINS** : Good explanatory chart depicting both fat soluble and water soluble vitamins with their various sources and reasons of requirement in the body.
- FN06 MINERALS** : Important minerals like Sodium, Iron, Calcium, Iodine etc. required in our body to live a healthy life are shown in the chart. Chart also shows various functions they perform and their sources.
- FN07 WATER & ROUGHAGE** : Chart shows the importance of water and roughage and some major functions performed by them in the body. Chart also gives a good knowledge about their sources.
- FN08 DEFICIENCY DISEASES** : Chart shows the havoc conditions arised due to deficiency of various nutrients in the body and their symptoms. The understanding of chart will indicate the importance of good balanced diet.
- FN09 OVERNUTRITION DISORDERS** : Chart shows that not only deficiency but also the over consumption of food is not good for health. Various overnutritional disorders with their causes and symptoms are depicted in the chart.
- FN10 Food's Nutritive Value** : Chart shows the nutrient's composition of various common foodstuffs in a tabular form.



LIFE SKETCH OF SCIENTISTS

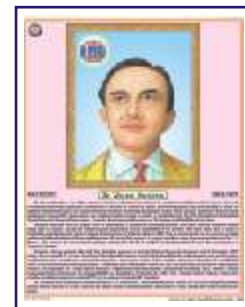
Size 45 x 57 cm Approx. Laminated and fitted with plastic rollers.



LSS01	Albert Einstein	LSS08	H.J. Bhabha	LSS15	Raja Ramanna
LSS02	A.P.J. Kalam	LSS09	J.C. Bose	LSS16	Ramanujan
LSS03	Archimedes	LSS10	Louis Pasteur	LSS17	Rutherford
LSS04	Birbal Sahni	LSS11	Madam Curie	LSS18	S.N. Bose
LSS05	C.V. Raman	LSS12	Meghnad Saha	LSS19	Sarabhai
LSS06	Darwin	LSS13	Mendeleev	LSS20	Thomas Edison
LSS07	Galileo Galillee	LSS14	Newton		

(Available in English as well as in Hindi) Each Rs. 98.00

(Above product code is for English. Please add H to the code for Hindi)



DISASTER MANAGEMENT CHARTS

Size 70 x 100 cm. English & Hindi combined. Laminated Each Rs. 200.00

- DMS01 What is a Disaster
 DMS02 Disaster Management Cycle-1 **NEW**
 DMS03 Disaster Management Cycle-2 **NEW**
 DMS04 Earthquake
 DMS05 Tsunami
 DMS06 Flood

- DMS07 Cyclone
 DMS08 Forest Fire
 DMS09 Landslide **NEW**
 DMS10 Nuclear Disaster **NEW**
 DMS11 Chemical Disaster **NEW**
 DMS12 Biological Disaster **NEW**



ENVIRONMENTAL SCIENCE

Size 50 x 70 cm. English. Laminated Each Rs. 116.00

- ES01 Garbage Management
 ES02 Sewage Treatment Plant

Coming Soon...

ES03 Global warming & Greenhouse effect



A vivid display will go deep down in memory.

BIOLOGY MODELS

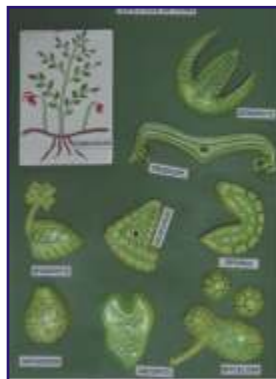
BOTANY MODELS

Made of Fiber Glass on MDF Board. Each Model size 60 x 45 cm Price Rs. 2006.00 each

- BMB01 Plant Cell
BMB02 Germination of Seed
BMB03 Fertilization & Angiosperms
BMB04 Plant Cell Meiosis
BMB05 Plant Cell Mitosis
BMB06 L. S. Flower
BMB07 L. S. Ovary

- BMB08 T. S. Monocot Root
BMB09 T. S. Dicot Root
BMB10 T. S. Monocot Stem
BMB11 T. S. Dicot Stem
BMB12 T. S. Monocot Leaf
BMB13 T. S. Dicot Leaf
BMB14 Root Tip

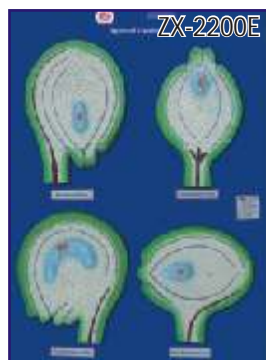
- BMB15 Life Cycle : Moss
BMB16 Life Cycle : Fern
BMB17 Life Cycle : Fungus
BMB18 Spirogyra
BMB19 Pitcher Plant
BMB20 Funaria Plant



ZX-2200E

Types of Ovules

- Price Rs. 3186.00
- 4 pieces model on board.
- Model shows anatropous, orthotropous, amphitropous and hemi-anatropous ovules.
- Size : 45x60x3
- 9 parts labeled in total.



ZX-2600E

L.H. of Angiosperm

- Price Rs. 3186.00
- Model is a set of 19 piece.
- Model is mounted on board to show the life cycle of an angiosperm.
- Size : 60x45x3 cm.
- 13 parts labeled in total.



ZX-2500E

Monocot Seed Germination

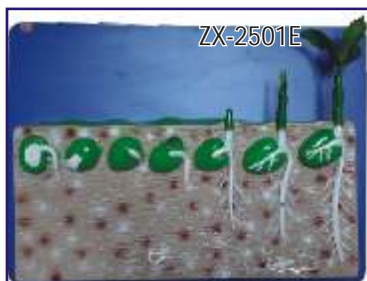
- Price Rs. 2950.00
- Stages of germination (Hypogeal) in maize is shown.
- Mounted on wooden base.
- Size: 56 x 41 x 9 cm
- 8 parts labeled in total



ZX-2501E

Dicot Seed Germination

- Price Rs. 2950.00
- Stages of germination (Hypogeal) in pea is shown.
- Mounted on wooden base.
- Size: 56 x 41 x 9 cm.
- 8 parts labeled in total



MODELS OF FLOWERS



Made of Fiber Glass on stand.

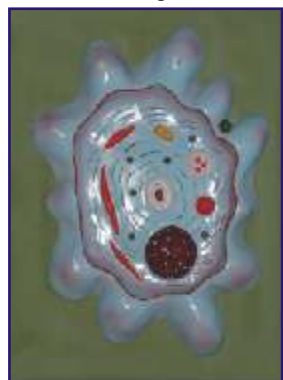
Price Rs. 1357.00 each

- BMF01 Typical Flower
BMF02 Liliaceae Flower
BMF03 Rosaceae Flower

ZOOLOGY MODELS

Made of Fiber Glass on MDF Board. Each Model Size 60 x 45 cm Price Rs. 2006.00 each

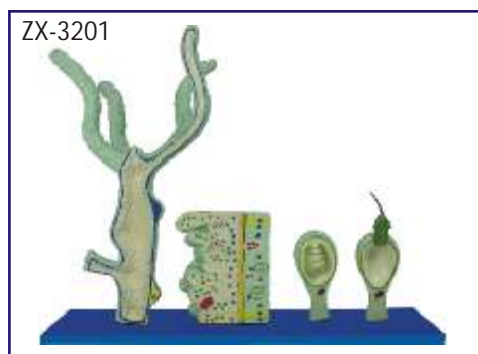
BMZ01	Animal Cell	BMZ08	Malarial Parasite	BMZ15	Development of Frog
BMZ02	Animal Cell Meiosis	BMZ09	Bacteria	BMZ16	Life History of Silk Worm
BMZ03	Animal Cell Mitosis	BMZ10	Virus	BMZ17	Life History of Mosquito
BMZ04	Amoeba	BMZ11	Frog Dissection	BMZ18	Life History of Honey Bee
BMZ05	Paramecium	BMZ12	Rat Dissection	BMZ19	Life History of Butterfly
BMZ06	Hydra	BMZ13	Fish Dissection	BMZ20	Life Cycle of Tapeworm
BMZ07	Euglena	BMZ14	Rabbit Dissection		



ZX-3200E Tape Worm

• Price Rs. 6372.00

- Set of 8 pieces model shows scolices of beef tapeworm (Taenia Saginata), pork tapeworm (Taenia Solium), mature egg, larval stage tapeworm and longitudinal sections of gravid, immature and mature proglottid.
- Size: 55x40x6 cm.
- 27 parts labeled in total.



ZX-3201 HYDRA

• Price Rs. 2832.00

- 4 piece model mounted on board.
- Significant anatomical features shown include ectoderm, mesoglea, coelenteron, male testis and female egg cells, buds, hypostome, nematoblast cells, cnidoblast etc.
- 28 parts are labeled in total.

**ZX-3208E
Bony Fish General Anatomy**

• Price Rs. 6962.00

- Replica model on stand of a bony fish (perch)
- Model is longitudinally dissected in 5 parts.
- Details of external features are shown on one side & internal anatomy is shown on other side.
- Removable parts are magnetically secured in position. 42 parts labeled in total.
- Life size.



SPECIAL MODELS ON HUMAN ANATOMY

- HA101A HUMAN BODY TORSO** - Torso with head with detachable internal structure of Head and neck, Organs of Thorax and abdomen cavities of the viscera can be emptied, for study of blood vessels. Dissectable in 12 parts made of Fibre Glass painted in natural colours. Made of Fiber Glass. Magnetic. Life Size
Rs. 10030.00
- HA101 HUMAN BODY** - Torso with head with detachable internal structure of Head and neck, Organs of Thorax and abdomen cavities of the viscera can be emptied, for study of blood vessels. Dissectable in 12 parts made of Fibre Glass painted in natural colours. Made of Fiber Glass. Life Size Non magnetic.
Rs. 7788.00
- HA102 Human Body** - Torso Small size
Rs. 2124.00
- HA103 HUMAN SKELETON** - Life size made of fibre glass. All the bones shoulder & hip joints clearly depictable
Rs. 2950.00
- HA103S Stand for above**
Each Rs. 1947.00
- HA104 HUMAN SKELETON** - Plastic size 70 cm with stand.
Rs. 1062.00
- HA105 HUMAN SKELETON** - Plastic size 40 cm with stand.
Each Rs. 230.00
- HA106 Dummy with Doll** made of Fibre Glass
Each Rs. 4838.00
- HA106A Dummy Baby for Dummy with Doll**
Each Rs. 1298.00
- HA107 Female Pelvis with child**
Each Rs. 2006.00
- HA108 Female Pelvis with reproductive organs**
Each Rs. 2006.00



HA109 Delivery Process Models set of 8

Set Rs. 9440.00

HA110 Development of Fetus/Embryo set of 9

Set Rs. 4425.00



HA110L Development of Fetus/Embryo set of 9 Large size set Rs. 10502.00

HA111F Full Size Human Female Body Fibre Glass

Showing organs & muscles

Each Rs. 38940.00

HA111M Full Size Human Male Body Fibre Glass

Showing organs & muscles

Each Rs. 38940.00

HA112 RNA 60 x 45 cm

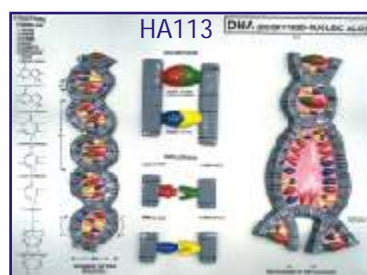
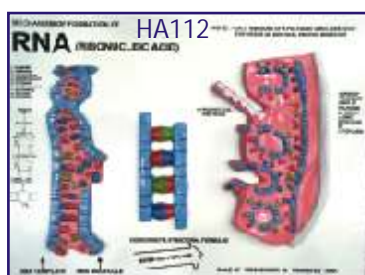
Each Rs. 2006.00

HA113 DNA 60 x 45 cm

Each Rs. 2006.00

HA116 Human Placenta Model made of Fiber Glass

Each Rs. 1770.00



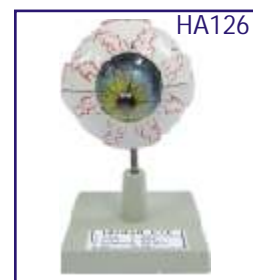
SPECIAL MODELS ON HUMAN ANATOMY

Dissectable Models (Fibre Glass)

HA126	Eye Ball	Each Rs. 445.00
HA127	Human Heart	Each Rs. 445.00
HA128	Human Ear	Each Rs. 445.00
HA129	Human Brain	Each Rs. 445.00
HA130	Human Kidney	Each Rs. 445.00
HA131	Human Lungs	Each Rs. 445.00

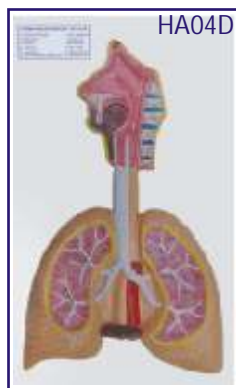
Fibre Glass Models (Wooden Base) size 81 × 31 cm

HA151	Human Digestive System	Each Rs. 2183.00
HA152	Human Blood Circulatory	Each Rs. 2183.00
HA153	Human Nervous System	Each Rs. 2183.00
HA154	Human Reproductive Male	Each Rs. 2183.00
HA155	Human Reproductive Female	Each Rs. 2183.00
HA156	Human Excretory System	Each Rs. 2183.00
HA157	Human Respiratory System	Each Rs. 2183.00
HA201	Nursing Manikin Female Made of Fibre Glass Life Size	Each Rs. 23010.00
HA202	Nursing Manikin Male Made of Fibre Glass Life Size	Each Rs. 23010.00



HUMAN ANATOMY 3-D MODELS

Deluxe Quality, Made of Fiber Glass, Mounted on Wooden Board
Size 30 × 50 cm Price Rs. 885.00 each



HA01D Teeth
HA02D Circulatory System
HA03D Digestive System
HA04D Respiratory System
HA05D Nervous System
HA06D Skeleton
HA07D Head & Neck
HA08D Skin
HA09D Mouth
HA10D Tongue

HA11D Spinal Cord
HA12D Stomach
HA13D Liver
HA14D Kidney
HA15D Brain
HA16D Heart
HA17D Eye
HA18D Ear
HA19D Male Pelvis
HA20D Female Pelvis

HA21D Reproductive Organs (Female)
HA22D Reproductive Organs (Male)
HA23D Lungs with Heart & Larynx
HA24D Skull
HA25D Excretory System
HA26D Endocrine System Male
HA27D Endocrine System Female
HA28D Muscular System Front View
HA29D Muscular System Back View
HA30D Nose

The models are manufactured under expert supervision.

PHOTOS OF GREAT PERSONALITIES

MATT CANVAS LAMINATED ON NUWOOD BOARD

GREAT SCIENTISTS

Size 31 × 43 cm Approx (GS01P - GS140P)

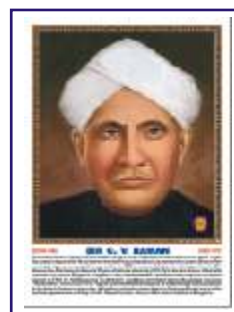
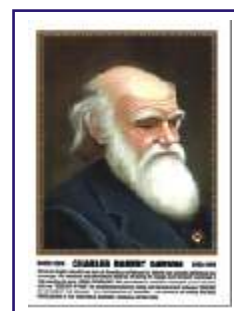
Each Rs. 484.00

Size 45 × 60 cm Approx (GS01PS - GS140PS)

Each Rs. 1475.00

GS01 Charles Robert Darwin (B)
 GS02 Gregor Mendel (B)
 GS03 Lamarck (B)
 GS04 Louis Pasteur (B)
 GS05 Dr. William Harvey (B)
 GS06 Leonardo-da-Vinci (B)
 GS07 Sir Joseph Lister (B)
 GS08 Anton Van Leeuwenhoek (B)
 GS09 Carl Von Linnaeus (B)
 GS10 Edward Jenner (B)
 GS11 Sir James Young Simpson (B)
 GS12 Thomas Henry Huxley (B)
 GS13 Sir Edwin Ray Lankester (B)
 GS14 Sir Ronald Ross (B)
 GS15 Hugo De-vries (B)
 GS16 Sir Charles Bell (B)
 GS17 Alfred Russel Wallace (B)
 GS18 Sir J. C. Bose (B)
 GS19 Dr. Birbal Sahni (B)
 GS20 Sunder Lal Hora (B)
 GS21 Galileo Galilee (P)
 GS22 Sir Isaac Newton (P)
 GS23 Sir C. V. Raman (P)
 GS24 Dr. H. J. Bhabha (P)
 GS25 Archimedes (P)
 GS26 Albert Einstein (P)
 GS27 Thomas Alva Edison (P)
 GS28 Robert Boyle (P & C)
 GS29 Marie Curie (P & C)
 GS30 Michael Faraday (C)
 GS31 John Dalton (C)
 GS32 Dr. P. C. Ray (C)
 GS33 Dr. H. G. Khorana (B & C)
 GS34 Dr. S. S. Bhatnagar (C)
 GS35 S. Ramanujan (P & M)
 GS36 Antoine Laurent Lavoisier (C)
 GS37 William Ramsay (C)
 GS38 Humphry Davy (C)
 GS39 August Weismann (B)
 GS40 Joseph Priestley (C)
 GS41 Aristotle (B)
 GS42 Dmitri I. Mendeleef (C)
 GS43 Burbank Luther (B)
 GS44 S. N. Bose (P)
 GS45 M. N. Saha (P)
 GS46 K. S. Krishnan (P)
 GS47 K. N. Bahl (B)
 GS48 J. J. Thomson (P)
 GS49 Neils Bohr (P)
 GS50 Gilbert Newton Lewis (C)

GS51 A. P. J. Abdul Kalam (P)
 GS52 Dr. Vikram Sarabhai (P)
 GS53 Aryabhata (P, A & M)
 GS54 Dr. S. S. Joshi (C)
 GS55 Sir Alexander Fleming (B)
 GS56 D. Mata Parshad (C)
 GS57 Benjamin Franklin (P)
 GS58 Ernest Rutherford (P & C)
 GS59 Dr. Raj Ramanna (P)
 GS60 Nicholas Copernicus (A & P)
 GS61 Alessandro Volta (P)
 GS62 Alfred Nobel (C)
 GS63 Anton Henry Bekuerel (P)
 GS64 Atovan Gerok (P)
 GS65 Benjemin Thomson (P)
 GS66 Crick (B)
 GS67 Watson (B)
 GS68 Edward Victor Aplaton (P)
 GS69 James Clark Maxwel (P)
 GS70 Jessek Luious Gelusale (P & C)
 GS71 Johns Kepeler (A & P)
 GS72 Kalpana Chawla (A & P)
 GS73 Max Planck (P)
 GS74 Panchanan Maheshwari (B)
 GS75 Varah Mihir (A, P & M)
 GS76 Sunita Williams (P)
 GS77 James Watt (P)
 GS78 Andre Marie Ampere (P & M)
 GS79 A. Graham Bell (P)
 GS80 Edwin Powell Hubble (A & P)
 GS81 Rakesh Sharma (A)
 GS82 M. S. Swaminathan (B)
 GS83 Robert Hooke (P, B & A)
 GS84 S. R. Ranganathan (M & Lib.)
 GS85 J. B. S. Haldane (B)
 GS86 Guglielmo Marconi (P)
 GS87 Wilbur Wright (P)
 GS88 Orville Wright (P)
 GS89 Neil Armstrong (P & A)
 GS90 Wihelm Roentgen (P)
 GS91 S. Chandrasekhar (P & A)
 GS92 Lord Kelvin (P & M)
 GS93 Charles Babbage (P & M)
 GS94 Friedrich Wohler (C)
 GS95 Frederick William Herschel (A)
 GS96 J. J. Berzelius (C)
 GS97 James Chadwich (P)
 GS98 Dr. Vijay P. Bhatkar (P)
 GS99 C. N. R. Rao (C)
 GS100 George Boole (M)



Photos size 31 × 43 cm

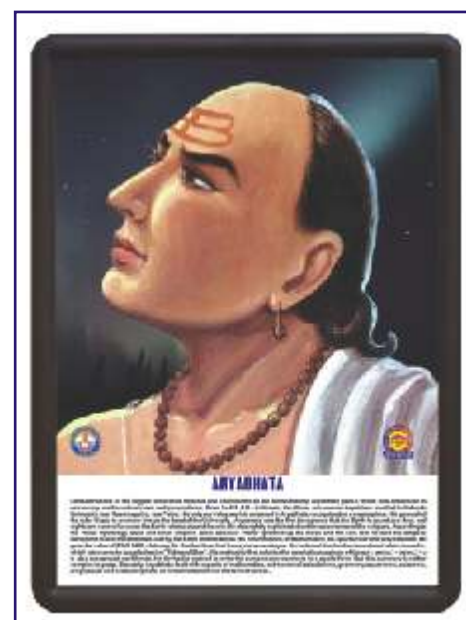


Photo size 45 × 60 cm

(A) Astronomer, (B) Biologist, (C) Chemist, (M) Mathematician, (P) Physicist

GREAT SCIENTISTS

Size 31 × 43 cm Approx (GS01P - GS140P)
 Size 45 × 60 cm Approx (GS01PS - GS140PS)

Each Rs. 484.00
 Each Rs. 1475.00

GS101 Albert Abraham Michelson (P)	GS121 Venkatraman Ramakrishnan (C)
GS102 Stephen Hawking (P & A)	GS122 William Roxburgh (B)
GS103 Amedeo Avogadro (P)	GS123 Erwin Schrodinger (P)
GS104 Johannes Gutenberg (P)	GS124 Nikola Tesla (P)
GS105 Pierre Curie (P,C)	GS125 John Vincent Atanasoff (P)
GS106 Hans Christian Oersted (P & C)	GS126 Heinrich Hertz (P)
GS107 Henry Moseley (P)	GS127 Charles Francis Jenkins (P)
GS108 John Alexander Reina Newlands (C)	GS128 Jacobus Henricus Van'thoff (P & C)
GS109 Camillo Golgi (B)	GS129 Linus Carl Pauling (B & C)
GS110 Zacharias Janssen (P)	GS130 Friedrich Wilhelm Ostwald (C)
GS111 Georg Simon Ohm (P)	GS131 Svante August Arrhenius (C)
GS112 Johann Wolfgang Dobereiner (C)	GS132 Prof. S. R. Kashyap (B)
GS113 Thomas Hunt Morgan (B)	GS133 Frederick Sanger (C)
GS114 Christian Doppler (P & M)	GS134 Kary Banks Mullis (C)
GS115 Girolamo Cardano (P & M)	GS135 Michael Smith (C)
GS116 Robert Hanbury Brown (P)	GS136 G. N. Ramachandran (P)
GS117 Yellapragada Subbarow (B & C)	GS137 Alfonso Corti (B)
GS118 Prof. Yash Pal (P)	GS138 Ernst Mayr (B)
GS119 Josef Stefan (P & M)	GS139 Paul Ehrlich (B)
GS120 Melvin Calvin (C)	GS140 Thomas Young (P)

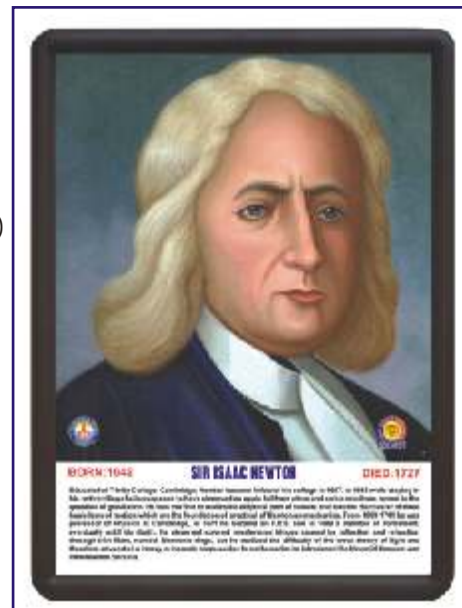


Photo size 45 × 60 cm

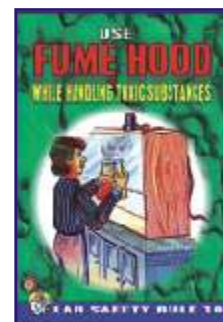
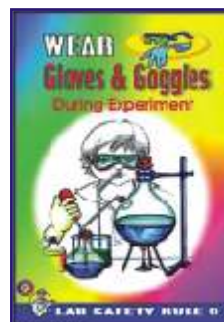
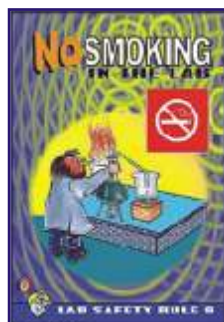
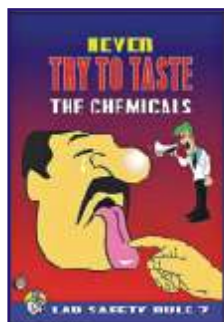
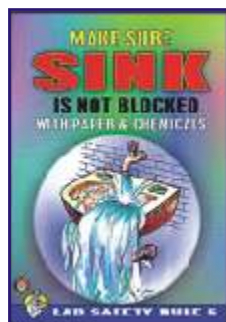
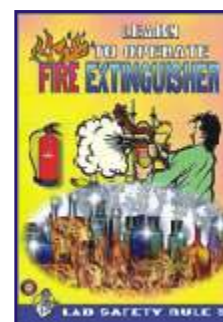
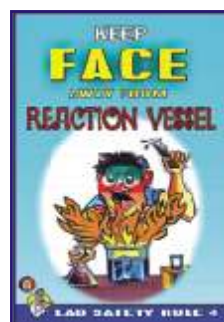
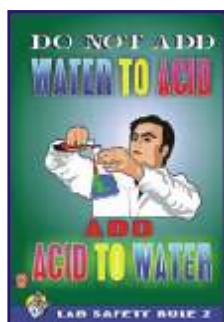
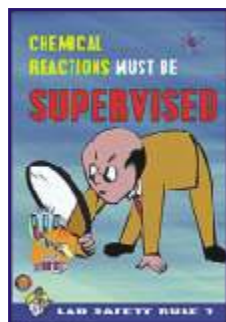
(A) Astronomer, (B) Biologist, (C) Chemist, (M) Mathematician, (P) Physicist

LAB SAFETY PHOTOS

Size 31 × 43 cm Approx (LSP01P - LSP10P)

Each Rs. 484.00

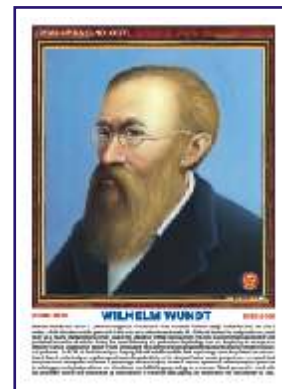
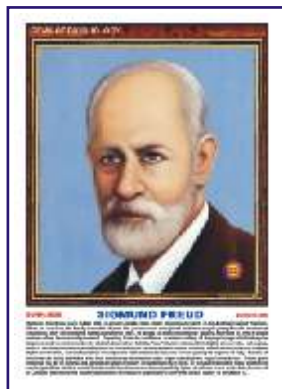
LSP01P Chemical reactions must be supervised	LSP06P Make sure sink is not blocked with paper & chemicals
LSP02P Do not add water to acid	LSP07P Never try to taste the chemicals
LSP03P Keep first aid box handy	LSP08P No smoking in the lab
LSP04P Keep face away from reaction vessel	LSP09P Wear gloves & goggles during experiment
LSP05P Learn to operate fire extinguisher	LSP10P Use fume hood while handling toxic substances



GEMS OF PSYCHOLOGY

Size 31 × 43 cm Approx (GP01P - GP75P) Each Rs. 484.00

Size 45 × 60 cm Approx (GP01PS - GP75PS) Each Rs. 1475.00



GP01 Abraham H. Maslow
 GP02 Albert Bandura
 GP03 Alfred Adler
 GP04 Alfred Binet
 GP05 Aristotle
 GP06 B. F. Skinner
 GP07 C. L. Hull
 GP08 Carl G. Jung
 GP09 Carl R. Rogers
 GP10 Charles Bell
 GP11 Charles Darwin
 GP12 Charles Sherrington
 GP13 D.O. Hebb
 GP14 David Hume
 GP15 David Wechsler
 GP16 Dr. Cyril Burt
 GP17 E. B. Titchner
 GP18 E. C. Toleman
 GP19 E. H. Weber
 GP20 Edward L. Thorndike
 GP21 Edwin Guthrie
 GP22 Emil Kraepelin
 GP23 Erich Fromm
 GP24 Erik Erikson
 GP25 Ernest Jones

GP26 F. A. P. Aveling
 GP27 F. J. Gall
 GP28 Francis Galton
 GP29 Frederick Perls
 GP30 G. S. Hall
 GP31 George Kelly
 GP32 Gordon Allport
 GP33 Gottfried W. Leibnitz
 GP34 Gustav T. Fechner
 GP35 Hans J. Eysenck
 GP36 Harlow
 GP37 Heinz Kohut
 GP38 Henry Murray
 GP39 Herbert Spencer
 GP40 Herman Rorschach
 GP41 Herman V. Helmholtz
 GP42 Hermann Ebbinghaus
 GP43 Herry S. Sullivan
 GP44 Immanuel Kant
 GP45 Ivan P. Pavlov
 GP46 J. M. Baldwin
 GP47 J. M. Cattell
 GP48 J. W. Cannon
 GP49 Jean Piaget
 GP50 Johann F. Herbart

GP51 Johannes P. Muller
 GP52 John B. Watson
 GP53 John Dewey
 GP54 John Locke
 GP55 Joseph Wolpe
 GP56 Julian Rotter
 GP57 K. S. Lashley
 GP58 Karen Horney
 GP59 Kurt Goldstein
 GP60 Kurt Koffka
 GP61 Kurt Lewin
 GP62 Max Wertheimer
 GP63 Melanie Klein
 GP64 Neil E. Miller
 GP65 Raymond B. Cattell
 GP66 Rene Descartes
 GP67 Rollo Reese May
 GP68 Sigmund Freud
 GP69 Thomas Hobbes
 GP70 Walter Mischel
 GP71 Wilhelm Wundt
 GP72 William James
 GP73 William Mc-Dougall
 GP74 William Sheldon
 GP75 Wolfgang Kohler

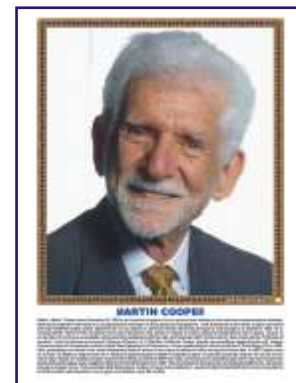
FAMOUS PERSONALITIES IN COMPUTER SCIENCE



Size 31 × 43 cm Approx (FCS01P - FCS12P) Each Rs. 484.00

Size 45 × 60 cm Approx (FCS01PS - FCS12PS) Each Rs. 1475.00

FCS01 Alan Turing	FCS07 Martin Cooper
FCS02 Charles Babbage	FCS08 Satya N Nadella
FCS03 Dr. Vijay P Bhatkar	FCS09 Shiv Nadar
FCS04 George Boole	FCS10 Steve Jobs
FCS05 Lady Lovelace	FCS11 Sundar Pichai
FCS06 Mark Zuckerberg	FCS12 Tim Berners Lee



HEALTH, HYGIENE & SANITATION

On a persistent demand from various Educational Institutions, NGO's, Rural Development Offices, Nursing Institutions we have recently published naturally coloured, useful and authentic charts incorporating all the modern researches and innovations on the subject. The charts are divided into two main topics as below :

HEALTH CARE SERIES

containing 10 Charts English & Hindi combined

Size 50x70 cm.

- HC01 * Health Rules
- HC02 * Causes of Diseases
- HC03 * Prevention of Diseases
- HC04 * Effects of Alcohol
- HC05 * Tobacco & Habit Forming Drugs
- HC06 * Clean Body
- HC07 * Clean Water
- HC08 * Constituents of Food
- HC09 * Malnutrition
- HC10 Immunization

Laminated Each Rs. 116.00

* Also Available In

English - Kannada

English - Tamil

English - Malayalam

English - Telugu

Each Rs. 126.00



PREVENT THE DISEASES

containing 24 Charts English & Hindi combined

Each chart depicts the Causes, Symptoms, Treatments, care to be taken.

Size 50x70 cm.

- | | |
|---------------------|----------------------------|
| PD01 * Cholera | PD13 * Dysentery |
| PD02 * Malaria | PD14 Hepatitis |
| PD03 * AIDS | PD15 Heart Attack |
| PD04 Plague | PD16 Diabetes |
| PD05 Tuberculosis | PD17 Asthma |
| PD06 Leprosy | PD18 Arthritis |
| PD07 Influenza | PD19 Thyroid |
| PD08 Jaundice | PD20 Blood Pressure |
| PD09 Cancer | PD21 Dengue |
| PD10 * Typhoid | PD22 Measles |
| PD11 Viral Diseases | PD23 Food Poisoning |
| PD12 Chicken Pox | PD24 Poliomyelitis (Polio) |

Laminated Each Rs. 116.00

* Also Available In

English - Kannada

English - Malayalam

English - Tamil

English - Telugu

Each Rs. 126.00



Illustrations are selective. For orders refer the list above.

DETAILED HUMAN PHYSIOLOGY CHARTS

Printed in original colours. Everything requisite for thorough understanding of Human Physiology in its broad out line included. Each size 70 × 100 cm.

Laminated

The Skeleton*#	HPM01
Human Muscles*#	HPM02
Blood Circulation*#	HPM03
Nervous System*#	HPM04
Digestive System*#	HPM05
Eye*#	HPM06
Ear*#	HPM07
Kidney, Skin & Excretory Organs*#	HPM08
The Respiratory System*#	HPM09
Human Heart*#	HPM10

All above price Rs. 180.00 each

Endocrine System	HPM11
Reproductive (Male)*	HPM12
Reproductive (Female)*	HPM13
Human Embryology	HPM14
Lymphatic System	HPM15
English-Hindi combined	Each Rs. 190.00
English Only (Add E to the code)	Each Rs. 190.00
HPM16E Human Brain Eng Only	Each Rs. 200.00
HPM17E Human Teeth Eng Only	Each Rs. 200.00

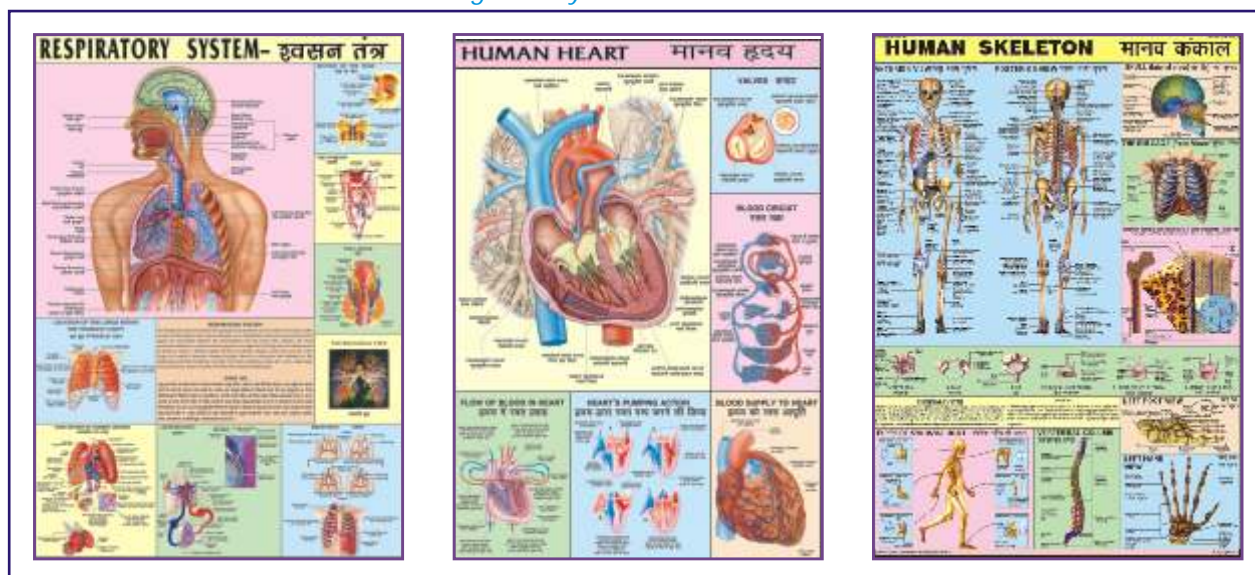
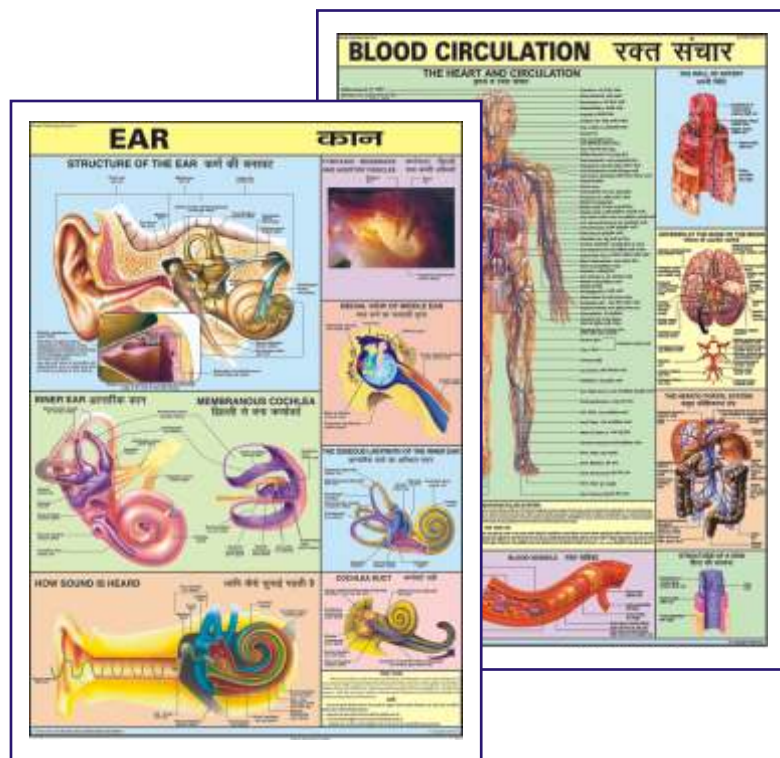
Available in following languages also

*English-Kannada(KN) *English-Malayalam(ML)

English-Tamil(TM) #English-Telugu(TG)

Price Rs. 200.00 each

For English only. Add E to the above code



ELEMENTARY HUMAN PHYSIOLOGY

HPS01 to HPS11 Elementary Human Physiology

Size 50 × 70 cms

Laminated Each chart Rs. 116.00

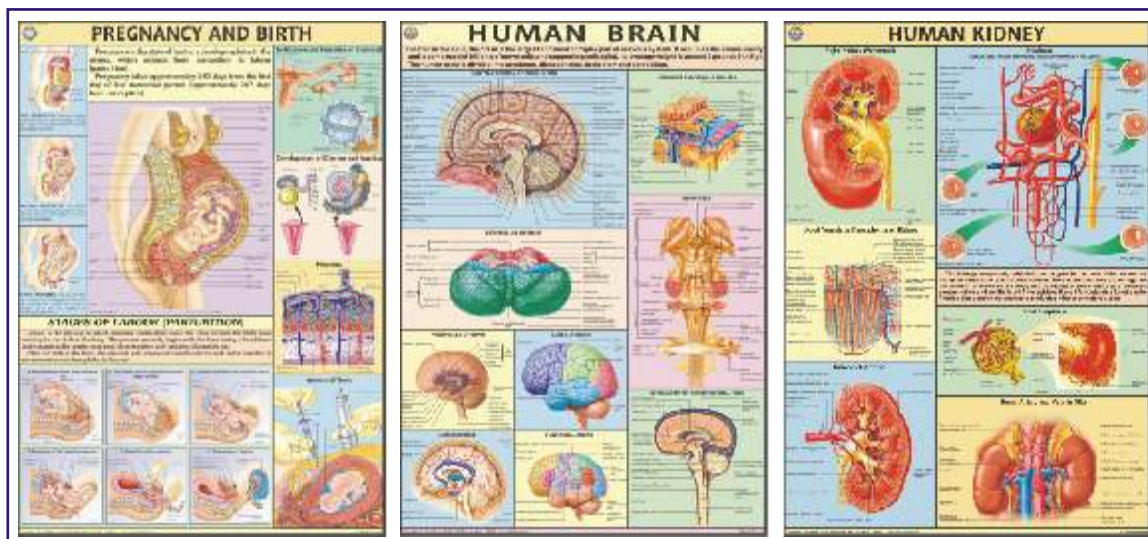
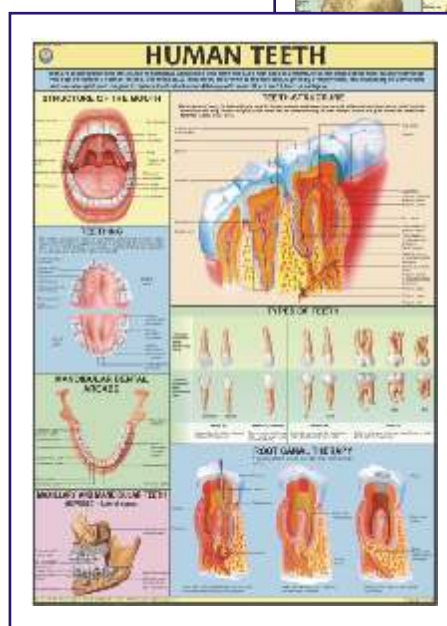
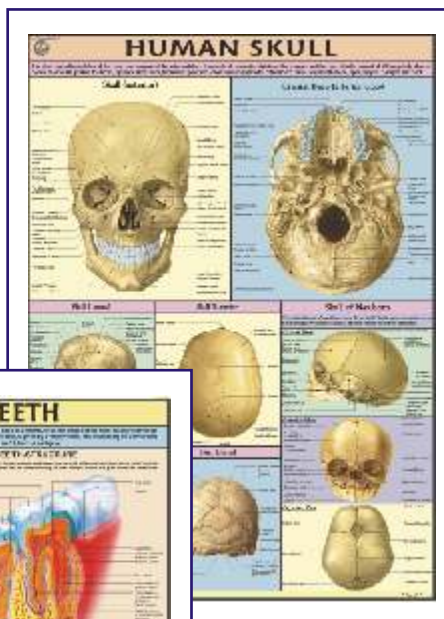
Available in English-Hindi only

For details please see the first 11 charts given above.

DETAILED HUMAN PHYSIOLOGY CHARTS

Printed on Synthetic in original colours . Everything requisite for thorough understanding of Human Physiology in its broad out line included. Each size 70 × 100 cms. Available in English only. Price Each chart Rs. 250.00

The Skeleton	HP01S
Muscles.....	HP02S
Blood Circulation	HP03S
Nervous System.....	HP04S
Digestive System.....	HP05S
Eye	HP06S
Ear	HP07S
Kidney, Skin & Excretory Organs.....	HP08S
The Respiratory System	HP09S
Human Heart	HP10S
Endocrine System.....	HP11S
Reproductive (Male).....	HP12S
Reproductive (Female)	HP13S
Human Embryology	HP14S
Lymphatic System.....	HP15S
Human Brain.....	HP16S
Human Teeth	HP17S
Pregnancy & Birth.....	HP18S
Human Kidney	HP19S
Urinary Tract	HP20S
Human Skull.....	HP21S
Ear, Nose, Throat	HP22S
Liver, Gall bladder & Pancreas	HP23S
Human Lungs.....	HP24S
Joints of the Body	HP25S
Immune System.....	HP26S
Human Skin	HP27S
Movable Joints (Synovial)	HP28S
Human Spinal Cord.....	HP29S
Menstrual Cycle	HP30S
Contraception (Birth Control)	HP31S
Vertebral Column	HP32S



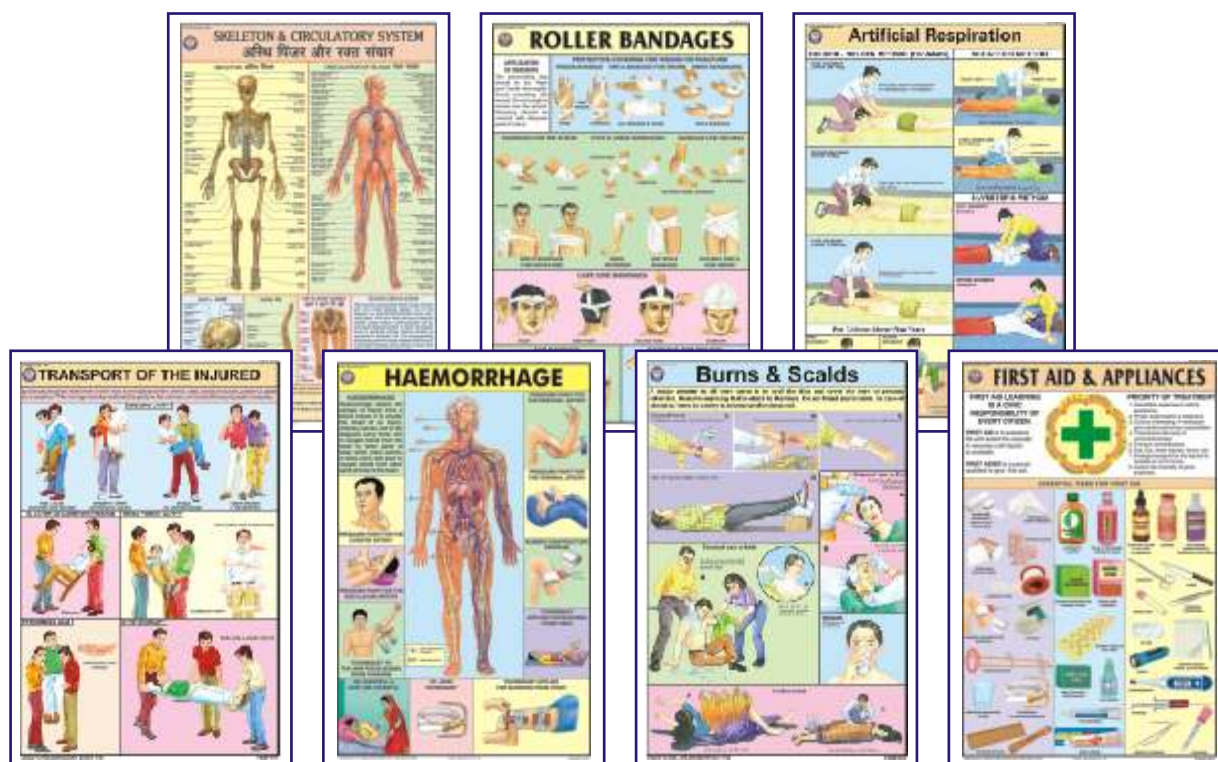
FIRST AID CHARTS

Each Chart size 50 × 70 cm - English and Hindi combined, Laminated

- FA01 **Skeleton & Circulatory System** : Gives the basic knowledge of human body.
- FA02 **Triangular Bandages** : Slings, knots and bandages for various parts of body.
- FA03 **Roller Bandages** : A protective covering for wound or fracture, methods of bandaging.
- FA04 **Fractures** : Simple & compound fractures, treatment of fracture in parts of body.
- FA05 **Artificial Respiration** : Showing Schafer's method, Silvestor's method & Holger Nielsen's method of artificial respiration. Outline of Respiratory system and what is suffocation.
- FA06 **Transport of the injured** : How to carry an injured person so that minimum movement of the injured portion is assured.
- FA07 **Unconsciousness** : Sun Stroke, fainting, epileptic fit, Infantile convulsions, drowning.
- FA08 **Haemorrhage** : Location of main arteries in the body and pressure points where when pressed, bleeding can be controlled.
- FA09 **Electric Shock Treatment** : How to remove live wires, treatment & whom to contact.
- FA10 **Emergency Resuscitation** : Mouth to mouth and Mouth to nose method. How to give external cardiac chest compression.
- FA11 **Removal of foreign bodies from eye, ear, nose** : Various precautionary methods to remove the foreign bodies and to ensure safety of organs.
- FA12 **Burns & Scalds** : Type of burns, treatment of chemical burns, clothing on fire.
- FA13 **Snakes & Their Bites** : Type of snakes, Identification of snakes on the basis of appearance, treatment of snake bite.
- FA14 **Poisons and their Antidotes** : Types of poisons, their symptoms & their treatment.
- FA15 **First Aid & Appliances** : What is First Aid, Qualities of a First Aider and essential appliances to give first aid.

Each Rs. 116.00

All the above Charts are available in English only also. Add E to the above code



Some Special Charts

- CD05 Life saving first aid instruction size 70x100 cm
- STG21 Fire & Fire Extinguishers size 58 x 90 cm

Rs. 200.00

Rs. 200.00

COLOURED CHARTS ON YOGA

Each Chart size 50 x 70 cms - Hindi & English combined, Laminated

Price Each chart Rs. 116.00

A faithful study and following the instructions as laid down in these charts, a vast treasure of super powers can be explored and developed within ourselves. For all round Physical, Mental, Emotional, Intellectual & Spiritual development of mind and body.

- YO01 1. Shuddhi Kriyas-Shat Karmas** : Kunjal-Vaman Dhauti, Kapal Bhati, Ghrit Neti, Sutra Neti, Jal Neti, Vastra Neti, Dand Dhauti, Nauli Karma, Tratak, Basti etc.
- YO02 2. Shankh Prakshalan** : Kagasan, Tadasan, Triyak Tadasan, Triyak Bhujangasan, Kati Chakrasan, Udarakarashanasan, Shavasan.
- YO03 3. Surya Namaskar** : A series of twelve steps, a complete exercise of all the parts of body. It makes the body strong, beautiful & active.
- YO04 4. Yog Mudras, Padmasan & Matsyasan** : These remove Spinal & Cervical pain, Asthma, Diabetes, Mental weakness, Gastric troubles, Knee pain, Eye Defects.
- YO05 5. Paschimottanasan & Ardh Matsyendrasan** : Spine becomes flexible and Elastic, the Abdominal organs- Digestive system, Nervous system are toned up.
- YO06 6. Vajrasan, Ustrasan & Supt Vajrasan** : These remove cervical and slipdisc defects diseases of chest, lungs, heart, abdomen, kidney etc. , excess fatness of Abdomen and back
- YO07 7. Bhujangasan, Shalabhasan, Dhanurasan & Mayurasan** : Abdominal Organs are toned up. Spine is strengthened. Remove Gastic Intestinal disorders etc. Mental Powers are developed.
- YO08 8. Pawan Muktasan & Chakrasan** : Keep Spine Young & Flexible. Improve Eye sight, Hearing, Smell Taste & Circulation of Blood to the brain.
- YO09 9. Sarvangasan & Halasan** : Reduce fat, make arms, legs, Blood circulation, Digestive system, Liver strong and maintains youthful look etc.
- YO10 10. Bandhas & Pranayams** : Mool Bandh, Jalandhar Bandh, Uddiyan Bandh, Mahabandh. Pranayam Mudra, Lom-vilom Pranayam, Nadishodan Pranayam, Agnisar Kriya.
- YO11 11. Spine & Related Organs** : Composition of spine, Positions of Psychic centres and Endocrine Glands are shown.
- YO12 12. Healthy Eye** : Eye washing, tratak on rising sun, Eye exercises, Palming.



Map Storage Stand

MAP STORAGE STAND

DS101 As illustrated for keeping 24 maps made of iron painted.

• Price Rs. 2773.00

DS102 For keeping 36 maps made of Iron painted.

• Price Rs. 3304.00

MAP STANDS

MAP DISPLAY STAND

DS103 The map hangs on the stand nearest to the students; it is easy for the teacher also to emphasise on a point. All folding sturdily built of iron pipes. Height Adjustable. Very convenient to carry from one class to another. Painted.

• Price Rs. 2065.00



Map Display Stand

Charts are laminated and fitted with plastic rollers.

BONES & SKELETON MODELS



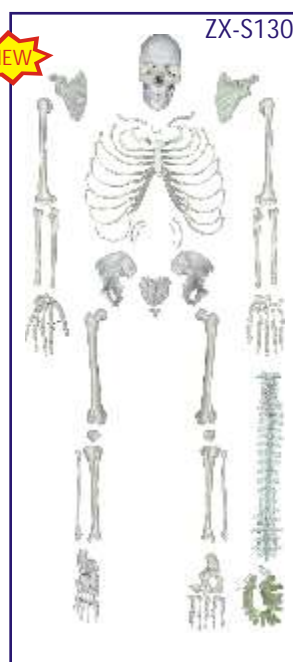
ZX-S101



ZX-S101

Human Skeleton Male Life Size Articulated

- Price Rs. 26314.00
- Life size • Made of PVC
- Bonnet can be removed, Mandible is movable, Teeth are separately installed & all skull foramina, fissures, processes are well depicted.
- Cervical artery, nerves, prolapsed (herniated) disk & hyoid bone shown.
- Coccyx separately mounted.
- Sacral canal clearly depicted.
- Upper limbs & lower limbs can be removed easily.
- Washable & Unbreakable.
- Mounted on stand with rollers.
- Key card / Manual provided.



ZX-S130



ZX-S130

Human Skeleton Disarticulated with Intervertebral Discs

- Price Rs. 14160.00
- Life size • Made of PVC
- Complete set of 201 pcs.
- Ideal for study of individual bones.
- Skull bonnet can be removed, Mandible is movable & all skull foramina, fissures, processes are well depicted.
- Teeth are separately installed, same as real one, in ceramic white color.
- Right hand and foot are articulated.
- Left hand and foot are disarticulated.
- All intervertebral discs provided.
- Hyoid bone, separate coccyx provided.
- Sacral canal clearly depicted.
- Instructional chart included.
- Key card / Manual provided.



ZX-S102PN



ZX-S102PN

Human Skeleton Model 85 cm Numbered

- Price Rs. 6136.00
- Made of PVC
- Demonstration of anatomically accurate natural movements.
- The points of origin (Red) and attachment (Blue) of the most important muscles from head to foot are marked in colour on the right side.
- Mounted on stand.
- 49 features marked.
- Key card / Manual provided.



XC-102B

XC-102B

Human Skeleton

- Price Rs. 8850.00
- Size 85cm Medium.
- Made of PVC plastic.
- Shows nerves and blood vessels.
- Depicts the position, course & distribution of main arteries & peripheral nerves
- Can be employed as a visual aid in the instruction of anatomy to students of medicine.



ZX-S103



ZX-S103

Desktop Skeleton 45 cm

- Price Rs. 1593.00
- 45 cm • Made of PVC
- Features three part skull, bonnet can be removed, Mandible is movable & skull foramina, fissures, processes are well depicted. Vertebral column is fixed.
- Flexible arms and legs allow for realistic movement.
- Mounted on stand
- Key card / Manual provided.



SK046

SK046 Mini Skeleton

- Price Rs. 2301.00
- Real life Model
- Detachable joints & Durable Parts
- ABS Stand
- Size: 46 cm(18")

ZX-1227



ZX-1227 Tiny Skeleton, 21cm

• Price Rs. 590.00

- Size : 21 cm height
- Made of PVC
- Well built and informative.
- Features three part skull, bonnet can be removed & all skull foramens, fissures, processes are well depicted. Vertebral column is fixed.
- Flexible arms and legs allow for realistic movement.
- Tiny version of human skeleton model.
- Erect on stand
- Model is accurately made from actual specimen references, photographs and encyclopedia reference under expert guidance.
- Model is great teaching tool for anatomy lessons.
- Key card / Manual provided.

ZX-1224P



ZX-1224P

Fetus Skeleton

• Price Rs. 6490.00

- Life size
- Made of PVC
- Human articulated fetal skeleton model.
- 32 weeks fetal skeleton structure shown.
- Skull & legs are detachable.
- Lower jaw is spring loaded enabling it to open and close.
- Model is rigid with stand & base.
- Key card / Manual provided.

ZX-S109



ZX-S109

Shoulder Joint Model Flexible

• Price Rs. 2124.00

- Life size
- Made of PVC
- Show shoulder joint abduction, adduction, forward tilt, backward tilt and inward/outward rotation.
- It is constructed with flexible plastic ligaments.
- Mounted on a plastic base.
- Key card / Manual provided.

ZX-S110



ZX-S110

Hip Joint Model Flexible

• Price Rs. 2242.00

- Life size
- Made of PVC
- Accurate representation of the hip joint and its ligaments.
- It is constructed with flexible plastic ligaments.
- Mounted on a plastic base.
- Key card / Manual provided.

ZX-S112



ZX-S112

Elbow Joint Model Flexible

• Price Rs. 2006.00

- Life size
- Made of PVC
- It consists of lower part of humerus bone and upper part of radius and ulna bones.
- It is constructed with flexible plastic ligaments.
- Mounted on a plastic base.
- Key card / Manual provided.

ZX-S111



ZX-S111

Knee Joint Model Flexible

• Price Rs. 2301.00

- Life size
- Made of PVC
- Model represents a functional model of knee joint with lateral ligaments, meniscus and patellar ligament.
- It is constructed with flexible plastic ligaments.
- Mounted on a plastic base.
- Key card / Manual provided.

ZX-S113A



ZX-S113A

Foot Joint Model Flexible

• Price Rs. 2478.00

- Life size
- Made of PVC
- Accurate representation of the foot joint and its ligaments
- It is constructed with flexible plastic ligaments
- Mounted on a plastic base.
- Key card / Manual provided.

ZX-S114A



ZX-S114A

Hand Joint Model Flexible

• Price Rs. 2301.00

- Life size
- Made of PVC
- All joints are movable according to real human flexibility, with radius and ulna.
- It is constructed with flexible plastic ligaments
- Mounted on a plastic base.
- Key card / Manual provided.



ZX-1212P

ZX-1212P Muscular Shoulder Joint Model

• Price Rs. 4366.00

- Life size • Made of PVC • Mounted on a plastic base
- Model is a realistic replica of a right shoulder joint muscles and ligaments.
- Model Features a semi-articulating right rotator cuff with an encapsulated humerus that can be removed from the capsular ligament. This allows demonstration of the rotator cuff's role in both fixing the humerus in the glenoid cavity and depressing it during elevation.
- Model includes eight ligaments and tendons, four bones (acromion, clavicle, humerus and scapula), and five muscles (infraspinatus, teres minor, teres major, subscapularis and supraspinatus) of the shoulder.
- Key card / Manual provided.



ZX-1226A Knee Joint Model Deluxe with Muscles & Ligaments

• Price Rs. 4720.00



ZX-1226A

- Life size (29 x 10 x 7.5 cm) • Made of PVC
- Model represents a slightly flexible right knee joint with associated muscles, ligaments and meniscus.
- It shows fibular collateral, tibial collateral, anterior and posterior cruciate, and patellar ligament with patella.
- The extended femur and patellar ligament are connected to top section of the quadriceps on this anatomical model.
- The model is constructed with somewhat rigid plastic ligaments.
- Mounted on display stand.
- Model is of superior quality with realistic texture and features and is very informative.
- Key card / Manual provided.

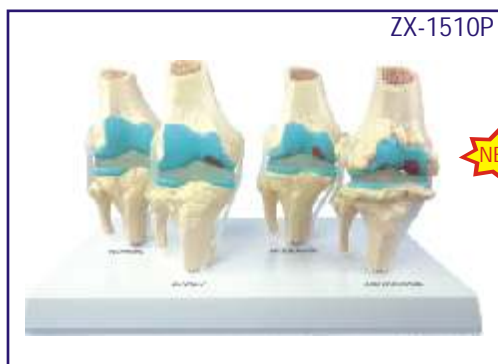


ZX-1225

ZX-1225 Muscular Hip Joint Model

• Price Rs. 4720.00

- Life size • Made of PVC
- It is a realistic replica of hip joint muscles and ligaments.
- Mounted on a plastic base.
- Key card / Manual provided.



ZX-1510P

ZX-1510P Knee Arthritis Model

• Price Rs. 5015.00

- Size reduced to 3/4 • Made of PVC
- Set of 4 knee models includes a normal knee joint and 3 models illustrating progressive degenerative knee joint disease from early to moderate and finally to advanced stage.
- Models shows osteoarthritic erosion to joint articular cartilage and formed osteophytes (bone spurs) at the articular surfaces.
- Mounted on display stand.
- Key card / Manual provided.



ZX-1203E

ZX-1203E Foot Model

• Price Rs. 2950.00

- Life size • Made of HSP resin
- Model shows significant structures of the foot such as muscles, bones and ligaments
- 31 features marked.
- Key card / Manual provided.



ZX-1601

ZX-1601 Bone Microstructure

• Price Rs. 5310.00

- 30x20x16 cm • Made of HSP resin
- 3-D section of a lamellar bone.
- It helps to understand the typical elements of a lamellar bone along with the Volkmann & Haversian system, spongy & compact parts, endosteum, cortical substance & osteocytes.
- Model shown various planes in cross and longitudinal section.
- 19 features marked.
- Key card / Manual provided.



ZX-S126

Vertebral Column Flexible Model Life Size

- Price Rs. 7434.00
- Life size
- Made of PVC
- Fully flexible
- It consists of the occipital plate, cervical, thoracic and lumbar vertebrae, sacrum, coccyx and complete pelvis
- Features include representations of the vertebral arteries, spinal nerve branches and a prolapsed L3-L4 intervertebral disc.
- Mounted on stand.
- Key card / Manual provided.



ZX-1505

Lumbar Vertebrae Degeneration Model

- Price Rs. 5192.00
- 35x23x19 cm
- Made of PVC
- Lumbar spine lesion demonstration model showing one pair of normal lumbar vertebrae, one vertebrae set with bulging herniated disc, one vertebrae set with bone/disc degeneration and one vertebrae set showing advanced osteoporosis with bone compression and bone spurs.
- Key card / Manual provided.



ZX-1223P

ZX-1223P

Didactic Vertebral Column, Half Size

- Price Rs. 3186.00
- Half size
- Made of PVC
- Fully flexible
- It is differentiated by colours to show 7 cervical vertebrae, 12 thoracic vertebrae, 5 lumbar vertebrae, sacrum and coccyx.
- Model also shows full pelvis and movable mounted femur heads.
- Mounted on stand
- Key card / Manual provided.



ZX-1223

Spinal Column Model Half Size

- Price Rs. 2832.00
- Half size
- Made of PVC
- Fully flexible
- Consists of the cervical, thoracic and lumbar vertebrae, sacrum, coccyx, complete pelvis and femur heads.
- Features include representations of the spinal nerve branches and a prolapsed L3-L4 intervertebral disc.
- Mounted on stand
- Key card / Manual provided.

Thoracic Vertebrae model Life Size



ZX-S120

• Price Rs. 4602.00

- Life size
- Made of PVC
- This model consists of the 12 thoracic vertebrae with intervertebral discs, thoracic nerves and spinal cord.
- In this model, true thoracic skeletal shape is restored, the shape is vivid, and the texture is clear and delicate. Anatomical details such as various bulges, bone sutures, and sulcus vascular indentations are expressed.
- Mounted on stand.
- The model is flexible just like original vertebrae.
- Key card / Manual provided.



ZX-S119

ZX-S119

Lumbar Vertebrae with Sacrum Bone

- Price Rs. 4602.00
- Life size
- Made of PVC
- Mounted on a stand
- The shape is vivid, and the texture is clear and delicate. Anatomical details such as various bulges, bone sutures and sulcus vascular indentations are expressed.
- Key card / Manual provided.



ZX-S104 Skull Model 3 Part PVC

- Price Rs. 3068.00
- Life size • Made of PVC
- Dissectable in 3 parts
- Bonnet can be removed, Mandible is movable & all skull foramina, fissures, processes are well depicted
- Teeth are separately installed, same as real one, in ceramic white color.
- Key card / Manual provided.



XC-104 Life Size Skull

- Price Rs. 3422.00
- This economical life-size adult plastic skull features a moveable jaw, cut calvarium, suture lines and 3 removable lower teeth-incisor, cuspid and molar.
- Dissectible into 3 parts.

ZX-1200 Skull with Removable Lower teeth



- Price Rs. 5546.00
- Life size • Made of PVC • Dissectable into 4 parts.
- This high quality classic skull with 16 teeth for extraction is medically detailed in structure. The teeth of the lower jaw can be individually extracted and replaced, and have fully formed roots for detailed examination. The model has a bone flap on its right mandible for viewing the dental roots, spongiosa, nerve canal, and an impacted wisdom tooth. The calvaria is removable to show the internal structure of the skull. The mandible is articulated and removable. All of the joints, sutures, fissures, foramen, and styloid processes are highly accurate.
- It is a perfect tool for anatomical and dental study.
- Key card / Manual provided.



ZX-1202 Human Skull Model Dx.

- Price Rs. 4838.00
- Made of high grade synthetic polymer having long durability.
- Size: Natural size.
- Dissectible into 3 parts with moveable jaw, cut calvarium.
- Well illustrated and informative.
- Model is accurately made from actual specimen references, photographs and encyclopedia reference under expert guidance.
- Model is a great teaching tool for anatomy lessons.



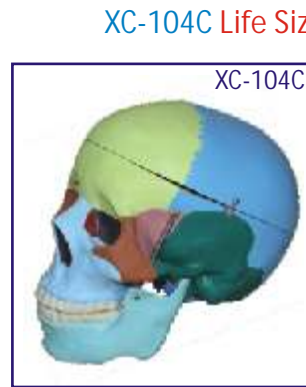
ZX-1202PN Skull Model Life size Painted-Numbered PVC

- Price Rs. 4720.00
- Life size • Made of PVC • Dissectible in 3 parts
- Muscle insertions and origins painted in blue and red respectively.
- Bonnet can be removed, Mandible is movable & all skull foramina, fissures, processes are well depicted.
- Teeth are separately installed, same as real one, in ceramic white color.
- 48 features marked. • Key card / Manual provided.

ZX-1208P Didactic Human Skull 22 Parts



- Price Rs. 14750.00
- Life size • Made of PVC
- Consists of 22 parts.
- Suture of each bone is equipped with magnets to assemble easily.
- The 22 bones are depicted in 10 different didactic colors to study the correct position and the relationship of all the structures. Each pair of bone plates has the same color.
- Key card / Manual provided.



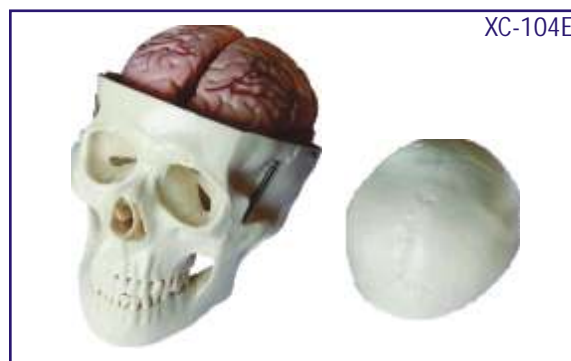
XC-104C Life Size Coloured Skull

- Price Rs. 5074.00
- This is advanced model of XC-104 life-size skull, bones painted in different colors for precise study.
- Can be disassembled into 3 parts.

ZX-1232PN Skull with Well Marked Sutures



- Price Rs. 3481.00
- Life size • Made of PVC
- Dissectable in 3 parts
- This skull model comes with a removable calvarium (skull cap) to show internal details and removable & an articulating mandible (jaw).
- All suture lines are beautifully painted for easy identification.
- 55 features marked.
- Key card / Manual provided.



XC-104E Skull Model with 8 Parts Brain

- Price Rs. 8024.00
- This Model is based on XC-104, includes 8 parts brain: frontal & parietal lobe, temporal & occipital lobe, encephalic trunk & cerebellum.

ZX-1209P Didactic Miniature Skull 15 Parts



- Price Rs. 3658.00
- 12.5x9x13 cm • Made of PVC
- Consists of 15 parts.
- Suture of each bone is equipped with magnets to assemble easily. All the bones are depicted in different colours, making this model a useful tool to study the correct position and the relationship of all the structures.
- Key card / Manual provided.



ZX-1204 Miniature Skull Model PVC

- Price Rs. 767.00
- 9.75x7x11 cm • Made of PVC
- Dissectable in 3 parts
- Bonnet can be removed, Mandible is movable. The foramen & fossa are present.
- Key card / Manual provided.



ZX-1201 Human Fetal Skull

- Price Rs. 2065.00
- Made of HSP resin having long durability.
- Natural size. Movable lower jaw.
- Total 41 parts labeled.
- Beautifully painted in colours.
- Showing incomplete ossification of skull bones, fontanelles, frontal and parietal eminences, various skull bones like occipital, temporal, sphenoid, frontal, mandible and maxilla.



ZX-S123 Male Pelvis Bone Model

- Price Rs. 2832.00
- Life size • Made of PVC
- Easy to study the structures and features of the hip, sacrum, coccyx & pubic symphysis.
- Separate coccyx.
- Sacral canal clearly depicted.
- Key card / Manual provided.



ZX-S124 Female Pelvis Bone Model

- Price Rs. 2832.00
- Life size • Made of PVC
- Easy to study the structures and features of the hip, sacrum, coccyx & pubic symphysis.
- Sacral canal clearly depicted.
- Key card / Manual provided.

JOINT SECTION MODELS

- Life size
- Made of PVC
- Mounted on a plastic base.
- Keycard / Manual provided.
- Textures of the spongy and compact bone material, directional striations of the muscle, smooth ribbing of nerve bundles and the smooth lumpy fat areas can be felt over in great detail with this relief model.



ZX-1214P

Shoulder Joint Section Model

- Price Rs. 4425.00
- Cross section of a human right shoulder.
- This cross section clearly shows the scapula, clavical, humerus and 1st-5th ribs, lateral cord, axillary artery, articular cartilage, deltoid, bicep, ligaments, fat, arteries, veins and dermis presented in one convenient model.



ZX-1215P

ZX-1215P

Hip joint Section Model

- Price Rs. 4425.00
- Cross section of a human right hip.
- This cross section clearly shows the bones, cartilage, muscles, tendons and dermis presented in one convenient model.



ZX-1216P

ZX-1216P

Knee Joint Section Model

- Price Rs. 4425.00
- Cross section of sagittal section of human knee joint.
- This cross section clearly shows the muscles, bones (including Femur, Tibia, and Patella), vasculature, ligaments, tendons and dermis presented in one convenient model.



ZX-1217P

ZX-1217P

Elbow Joint Section Model

- Price Rs. 4425.00
- Cross section of a human elbow.
- This cross section clearly shows the humerus, radius, ulna, muscles and dermis presented in one convenient model.



ZX-1218P

ZX-1218P

Foot Joint Section Model

- Price Rs. 4425.00
- Cross section of a human right foot/ankle.
- This cross section clearly shows the bones, cartilage, muscles, ligaments, vasculature, nerves and dermis presented in one convenient model.

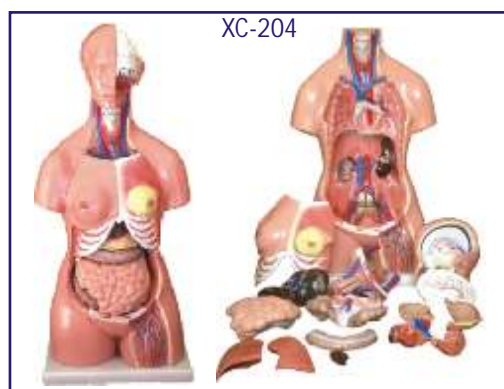


ZX-1219P

ZX-1219P Hand Joint Section Model

- Price Rs. 4425.00
- Cross section of a human right hand/wrist.
- This cross section clearly shows the bones, cartilage, muscles, tendons and dermis presented in one convenient model.

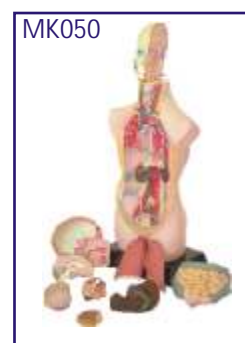
HUMAN TORSO MODELS



XC-204

XC-204 Unisex Torso 23 parts 85CM

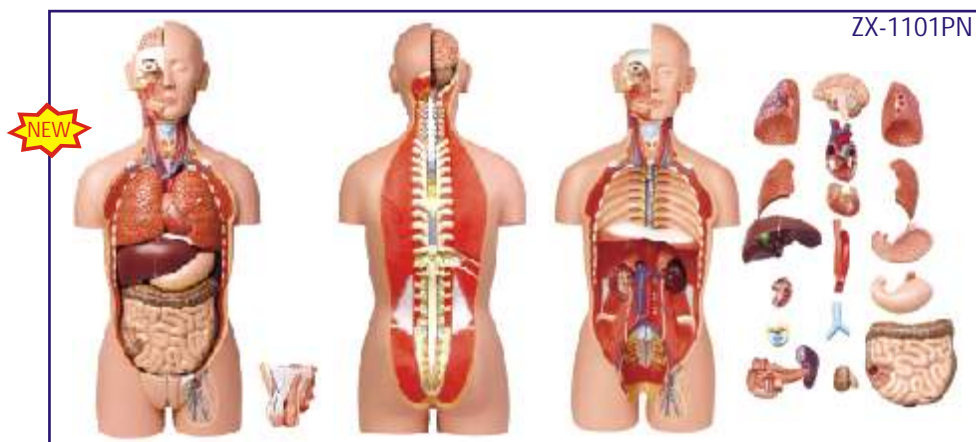
- Price Rs. 25370.00
- Size: 33.5" tall (85cm)
- Made of PVC plastic.
- Features an exposed spine with removable vertebra and spinal cord segments.
- Interchangeable male and female genitalia.
- The female organs include a fetus in the womb.
- Mounted on a plastic base.
- Dissectible into 23 parts: torso, female breast plate, head, eyeball, brain, vertebra spinal nerves, lung (2 parts), heart (2 parts), liver, kidney, stomach (2 parts), intestines (4 parts), male genitalia (2 parts), female genitalia with fetus (3 parts).



MK050

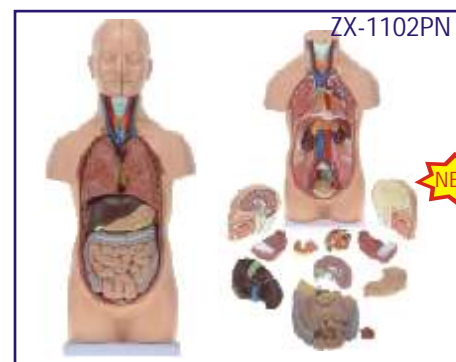
MK050 Human Torso

- Price Rs. 11682.00
- Hand Painted in Vivid & Natural Colours.
- 50cm High
- ABS Base
- 11 Dissectible Parts
- Fully Illustrated Colour Instruction Manual.

**ZX-1101PN Human Torso Deluxe 85 cm. 27 Parts 2-in-1**

• Price Rs. 56522.00

- 85 cm • Made of PVC • Dissectable in 27 parts.
- 2-in-1 with removable interchangeable male and female genitalia.
- The mouth cavity and nasal cavity is open.
- The head is open, the cerebrum with cerebellum can be taken out.
- Removable male & female reproductive organ and removable half kidney.
- Lung completely removable. Important structures of thoracic cavity like sympathetic column, azygos vein, hemiazygos vein, thoracic duct are well shown.
- Open neck & back providing full view of the nervous system, brain & whole spinal cord.
- The 12th thoracic vertebra can be taken out for close observation of vertebrae, spinal cord, spinal nerves and 3 layers of maters.
- Key card / Manual provided.

**ZX-1102PN Human Mini Torso 50 cm (12 Parts)**

• Price Rs. 12980.00

- 50cm tall • Made of PVC
- Dissectable in 12 parts.
- The model includes removable lungs, heart, liver, stomach, intestines, and head. Cecum can be easily removed from the intestine for additional internal view.
- The head is bisectable. One half of the brain is also removable. The heart can be bisected as well.
- Hooks & hidden magnets are used to keep the torso together.
- Mounted on a base.
- 73 features marked.
- Key card / Manual provided.

ZX-1103P Human Torso Small

ZX-1103P

- Price Rs. 3481.00
- 28cm tall • Sexless
- Made of PVC
- Dissectable in 15 parts - trunk, brain (2), heart, esophagus and aorta, lung (4), skull cover, stomach, diaphragm, liver, pancreas & spleen, and intestines.
- Details organs are depicted clearly.

- Mounted on a base.
- Key card / Manual provided.



ZX-1100E

ZX-1100E Human Torso Small (23 parts)

- Price Rs. 4425.00
- Size: 46 x 24 x 12.5 cm.
- Mounted on a plastic base.



MK064

MK064 Visible Expectant Mother Anatomy Kit

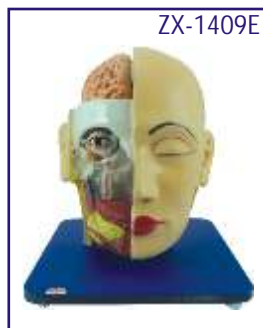
• Price Rs. 12390.00

- Size 55 cm.
- Dissectable in 48 pieces.
- Detailed instruction manual included.
- This visible anatomy model realistically shows the important parts of human body. Learn how body works by taking the model apart & see how the different organs work together to keep us alive & healthy.

ZX-1414P Human Head Model Sagittal Section

ZX-1414P

- Price Rs. 5841.00
- 33x23x5 cm • Made of PVC
- This extremely elaborate model shows the structure of the brain, spinal cord, nasal cavity, oral cavity and larynx.
- Mounted on base.
- Key card / Manual provided.



ZX-1409E

ZX-1409E Head, Brain and Eye

• Price Rs. 4602.00

- Life size • Made of HSP resin
- Model is in 4 parts with 2 parts brain and eye with optic nerve.
- Model shows natural position of nose, mouth cavity, pharynx, occiput & skull base.
- Mounted on board.
- 85 features marked.
- Key card / Manual provided.

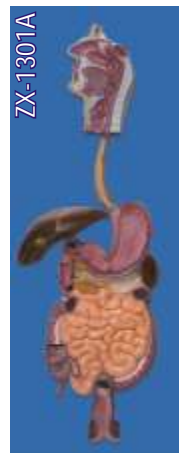
DIGESTIVE SYSTEM

ZX-1311PN Digestive System Model PVC



- Price Rs. 15340.00
- Life size • Made of PVC
- Dissectable in 2 parts.
- The oral cavity, the pharynx and the first part of the esophagus are dissected along the medial sagittal plane. The liver is shown together with the gall bladder and the pancreas is dissected. The Stomach is open along the frontal plane; the duodenum, caecum, part of the small intestine and the rectum are open to expose the interior. The transverse colon is removable. The relief model of the head shows the anatomy of the mouth with salivary glands.
- Mounted on base.
- 51 features marked.
- Key card / Manual provided.

ZX-1301A Human Digestive System



- Price Rs. 5664.00
- Life size • Made of HSP resin
- Relief model of human digestive system in median section dissectible into 3 parts.
- Duodenum, caecum and rectum are opened. Rectum is unfolded.
- Transverse colon and front half of the stomach are removable.
- The model features the oral cavity, pharynx, esophagus, stomach, liver with gall bladder, pancreas, GI tract and spleen.
- Mounted on sturdy wooden base.
- 56 features marked.
- Key card / Manual provided.



ZX-1416PN Liver Model PVC

- Price Rs. 4602.00
- Life size • Made of PVC
- Model shows lobulation, liver ligaments, portal structure, gall bladder, bile duct system.
- Mounted on base.
- 8 features marked.
- Key card / Manual provided.



XC-312 Liver Model

- Price Rs. 5546.00
- An economical way to study the basic structure of the liver.
- The complex vessels network in the opened liver, displayed in different colors on this model : hilus vessels, extra-hepatic and intra-hepatic bile ducts. Liver mounted on stand.



ZX-1408 Stomach

- Price Rs. 2714.00
- 17x16x25 cm. • Made of HSP resin
- Dissectable in 2 parts.
- It shows different muscle layers of stomach wall.
- Model shows lower esophagus, vessels and nerves.
- Mounted on stand with base.
- 36 features marked.
- Key card / Manual provided.



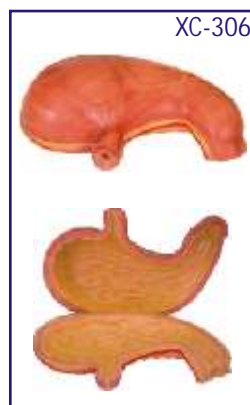
XC-311 Liver, Pancreas & Duodenum Model

- Price Rs. 3658.00
- To study the basic structure of the liver, spleen, blood vessels and pancreas.
- External structure are illustrated as well as the pancreatic duct of the pancreas.
- This model also shows the abdominal aorta & inferior vena cava.
- Life-size. Dissectible into 3 parts.
- Made of PVC. Size: 23 x 12.5 x 26 cm.

ZX-1402 Human Stomach, Pancreas & Duodenum



- Price Rs. 3009.00
- 20x15x10 cm • Made of HSP resin
- It shows layers of stomach wall.
- Dissectable in 3 parts.
- Model depicts lower esophagus, associated blood vessels and sectioned duodenum and pancreas (revealing large ducts up to its aperture).
- Mounted on stand with base.
- 70 features marked.
- Key card / Manual provided.



XC-306 Stomach Model

- Price Rs. 3304.00
- Made of hard plastic
- Magnified 2 times the natural size
- Shows the morphology of the stomach in a distended state.
- With the longitudinal section, the model shows the structures of the gastric folds, pyloric valve, pyloric sphincter muscles, gastric mucosa and the transitional mucosa of the gastric-esophagus.

ZX-1434P Caecum and Appendix, Enlarged



- Price Rs. 4720.00
- Size : 1.5 times enlarged
- Made of PVC
- Dissectable in 2 parts
- Mounted on display stand
- Caecum, appendix and its attachment to the large intestine demonstrated.
- Model can be opened to depict folds & texture of internal anatomy.
- Removable portion secured with magnets.
- Key card / Manual provided.

ZX-1514P Rectum Pathologies Model



- Price Rs. 4071.00
- Size : 22 x 12.5 x 11 cm
- Made of PVC
- Mounted on display stand
- Pathological conditions of the rectum and anus includes- ulcerative colitis, internal & external fistula, internal & external hemorrhoids, annular cancer, sessile polyp, submucosal abscess, skin tag, pedunculated polyp, supralelevator abscess, ischiorectal abscess, cryptitis, diverticulum, condyloma acuminatum, fissure and condyloma latum.
- Key card / Manual provided.

ZX-1606 Intestinal Villi

- Price Rs. 2950.00
- 31x20x43 cm.
- Made of HSP resin.
- Highly enlarged 3D replica model of small intestine shows one entire villus, one sectioned villus with arterioles and venules and one sectioned villus with lymphatic vessels. The model also shows different muscle layers in section.



- Mounted on sturdy wooden base.
- 17 features marked.
- Key card / Manual provided.

ZX-1511P Diabetes Mellitus Complications Model



- Price Rs. 9735.00
- Made of PVC
- Easy to remove and assemble.
- The model shows the effects of diabetes on the brain, eye, heart, kidney, artery, pancreas, neuron and foot.
- Model can be used to illustrate effects associated with diabetes: stroke, non-inflammatory disease of the retina, hypertensive heart disease, hardening of the kidney, hardening of the arteries, insulin resistance, neuropathy, and foot ulcerations.
- Key card / Manual provided.

HEART & CIRCULATORY SYSTEM

ZX-1312PN Circulatory System Model PVC



- Price Rs. 16520.00
- Size : Half Life Size
- Made of PVC
- This model is a half life-size relief model which includes a 2 part removable heart and exceptional details.
- Following anatomical structures are in detail: The arterial/venous system, the heart, the lungs, the liver, the spleen, kidneys, and a partial skeleton.
- Mounted on base.
- 70 features marked.
- Key card / Manual provided.

ZX-1302

Human Circulatory System



- Price Rs. 5664.00
- Half life size
- Made of HSP resin
- Model shows following anatomical structures : Arterial and venous system, Heart showing chambers, Liver, Spleen, Lung, Kidneys, Partial skeleton.
- Mounted on wooden base.
- 81 features marked.
- Key card / Manual provided.

ZX-1500 Blocked Artery Model



- Price Rs. 1888.00
- 12x8x4 cm.
- Made of HSP resin
- The model shows 4 stage cross section of narrowing of an artery due to build up of cholesterol and plaque.
- Four stages depict normal artery, fatty streak, fibrous plaque & blockage in order.
- All stages rotate on a hinge pin.
- 8 features marked.
- Key card / Manual provided.

ZX-1611E Blood Groups

- Price Rs. 2596.00
- 60 x 25 x 6 cm.
- Made of soft PVC
- The model shows eight blood types ie. blood type A-/A+/B-/B+/AB-/AB+/O-/O+ (according to the presence or absence of antigens & Rh factor).
- Mounted on board.
- 12 features marked.
- Key card / Manual provided.





ZX-1424PN

Heart Model Deluxe Life Size 2 Parts

- Price Rs. 3127.00
- Life size • Made of PVC • Dissectable in 2 parts
- Model parts held together with hidden magnets.
- The front wall of the heart can be removed and replaced easily, allowing for easy study of the internal structures of the heart.
- Mounted on base • 34 features marked.
- Key card / Manual provided.



PD002

PD002

Heart Model

- Price Rs. 3009.00
- Full size
- Durable ABS base
- Detachable cover piece.
- Highly realistic decoration.



ZX-1405E

ZX-1405E Human Heart (7 Parts)

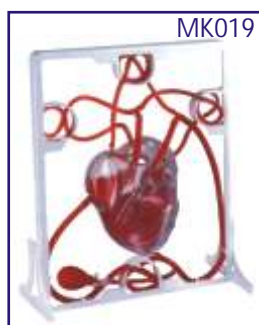
- Price Rs. 2596.00
- 20 x 20 x 22 cm.
- Made of HSP resin
- Model is sectioned to expose ventricles, atria, and valves.
- Model also depicts blood vessels of heart and heart musculature in detail.
- 33 features marked.
- Key card / Manual provided.



XC-307

XC-307 Jumbo Heart Model

- Price Rs. 4956.00
- Size: 25 x 23 x 23 cm.
- Made of PVC plastic.
- Clear conception of routes of the systemic and pulmonary circulation.
- Dissectible into 3 parts. 4 times enlarged.



MK019

MK019 Pumping Heart

- Price Rs. 2360.00
- A 3-D working plastic heart model with clear chambers. Squeeze bulb pumps simulated blood through clear heart chambers just like real one.
- Complete heart model with display stand.
- Complete instruction manual, easy to assemble.
- Acrylic Paints & Brush are included.

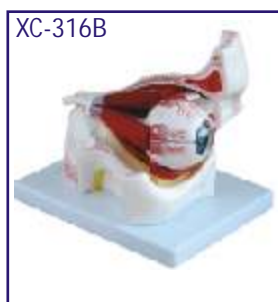
EYE



ZX-1410

ZX-1410 Eye Model on Stand

- Price Rs. 2242.00
- 15x15x32 cm. Model is highly magnified (6 times enlarged).
- Model is in 7 parts.
- Ideal for basic anatomical study of eye. shows sclera, cornea, eye muscle attachments, iris, retina, optic nerve & venels.
- Mounted on a removable stand.
- 34 features marked.
- Key card / Manual provided.



XC-316B

XC-316B

Eye with Orbit

- Price Rs. 8142.00
- The model shows the eyeball with optic nerves & muscles in its natural position in the bony orbit.
- Dissectible into 10 parts.
- 3 times enlarged.



XC-316

XC-316 Giant Eye Model

- Price Rs. 3540.00
- Size: 15.5cm. Made of PVC. Mounted on a plastic stand. 6 times enlarged Model. The different parts of the eyeball model are detachable.
- Tunica external: showing cornea and sclera with attachments of ocular muscles and optic nerve.
- Tunica media: showing the iris, the ciliary body and the chorioid. Tunica interna is retina.
- Refraction media: showing the lens and the vitreous body.

RESPIRATORY SYSTEM

ZX-1306 Human Respiratory System



- Price Rs. 5664.00
- Size : 40x80 cm. • Made of HSP resin.
- Well illustrated and informative.
- Upper half of the model displays nasal cavity, oral cavity, trachea, bronchia, bronchial tree in pulmonary lobe, right and left lungs cut open, heart in situ, pulmonary blood vessels and diaphragm with muscles attached to it.
- Lower half of the model shows enlarged pulmonary acinus displaying pulmonary alveoli, alveolar sacculles, bronchial artery and veins and alveolar capillary network.
- Model is accurately made from actual specimen references, photographs and encyclopedia reference under expert guidance.
- Mounted on wooden sturdy base board.
- 38 features marked.
- Key card / Manual provided.

XC-301 Human Larynx Model Magnified

- Price Rs. 2301.00

- Size : 11.5x11x24 cm, 3 parts dissectible.
- A functional model, On base 3 times enlarged.
- Shows movements of epiglottis & cartilages in the voice box.
- Helps to understand the morphology & structure of the respiratory tract and phonetic organ.



XC-324 Model of the Head

- Price Rs. 7316.00

- The relief model of human head shows all relevant structures in great details.
- The high quality model is delivered on a base board for easy display
- Natural size.
- Showing interior parts of the oral cavity and pharynx with network of vessels.



XC-309 Model of the Anatomical Nasal Cavity

- Price Rs. 2301.00

- This model helps the students to understand:
- External nose : shows the section of the nasal bones and cartilages.
- Nasal cavity : on the lateral nasal wall show the superior, middle and inferior nasal conchae project medially into the nasal cavity forming the superior, middle and inferior nasal maxillary sinuses.
- Paranasal sinuses : shows the frontal, sphenoid and maxillary sinuses.



ZX-1444PN Nasal Oral Cavity Model, Sagittal Section

- Price Rs. 3481.00

- Life size • Made of PVC
- This model shows the interior parts of nasal cavity, oral cavity, throat and pharynx.
- Sagittal section • Mounted on base.
- 12 features marked.
- Key card / Manual provided.

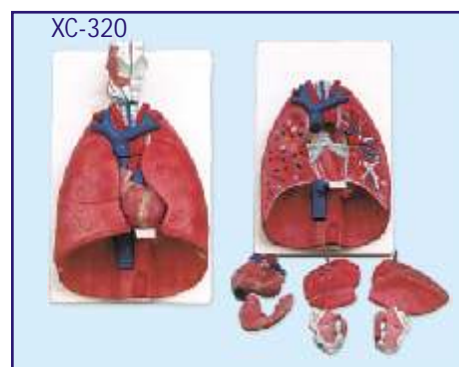


ZX-S320PN Respiratory System Model 7 Parts PVC

ZX-S320PN

- Price Rs. 14042.00

- Life size • Made of PVC
- Dissectable in 7 parts
- Showing the larynx (dissected along the sagittal plane), the lungs (dissected along the frontal plane) & a 2 parts heart.
- Mounted on base.
- 51 features marked.
- Key card / Manual provided.



XC-320

Larynx, Heart and Lungs Model

- Price Rs. 11210.00

- Life size, 36 x 23 x 12 cm
- Dissectable in 7 parts
- Made of PVC plastic

XC-302

Pulmonary Alveoli Model Magnified

• Price Rs. 3304.00

- Size: 26 × 15 × 35 cm.
- Made of PVC plastic and mounted on plastic base.
- The model shows the small branches of principal bronchus:
- Section of bronchiole of no cartilage.
- The relation between pulmonary alveoli & terminal bronchiole.
- The structure of alveolar sac and alveolar duct
- The capillary rete in the alveolar sapta.



XC-330 Model of the Transparent Lung Segment

• Price Rs. 9558.00

- Presents 10 segments in the right lung and 8 in the left. The distributions of the bronchial tree can be observed through the transparent lungs.
- Right lung: right upper lobe (3 segments), right middle lobe (2 segments), right inferior lobe (5 segments)
- Left lung: left upper lobe (4 segments), left inferior lobe (4 segments).
- Distribution of the bronchial tree: right bronchus, left bronchus.
- Hilus of lung. The lung made of transparent plastic. The trachea & bronchial tree is made of PVC.



SKIN & EAR

ZX-1604



ZX-1604 Skin Model

• Price Rs. 2242.00

- 21x10x25 cm.
- Made of HSP resin
- Model shows 3-D section of human skin.
- The model represents differentiated skin layers, hair, sweat glands, sebaceous glands, blood vessels, nerves and receptors for detailed examination.
- Mounted on sturdy wooden board for easy display.
- 35 features marked.
- Key card / Manual provided.

XC-313



XC-313 Skin Model Enlarged

• Price Rs. 3717.00

- A greatly enlarged (105 times) cross sectional view of the human skin showing three layers-epidermis, dermis, hypodermis, structures of the human scalp and a close-up view of a hair follicle, sweat gland, fatty tissue, sebaceous gland, blood vessels & nerves. Front, side and back view.
- Mounted on a plastic base.
- Size: 27 × 10 × 31 cm.

XC-313-2



XC-313-2

Skin Block Model

• Price Rs. 5841.00

- This model shows a section of human skin in three dimensional forms. Hair, sebaceous and sweat glands, receptors, nerves and vessels are shown in detail.
- 70 time enlarged.

XC-303C

Ear Model New Style Giant Size

• Price Rs. 3658.00



- Dissectible in 6 parts.
- Made of PVC Plastic.
- Size 33x15x23 cm.

ZX-1401 Human Skin

• Price Rs. 1593.00

- 30x35 cm
- Made of HSP resin
- The skin relief model of a skin section of the head.
- Skin section portrays the anatomy of the skin at 70 times life size and shows:- Representation of hair follicles with sebaceous glands, Sweat glands, Receptors, Nerves, Blood Vessels, Different layers of the skin.
- Mounted on sturdy wooden base.
- 31 features marked.
- Key card / Manual provided.

ZX-1401



REPRODUCTIVE SYSTEM

ZX-1304 Human Reproductive System Male

- Price Rs. 5664.00
- 40x80 cm. • Made of HSP resin
- Upper half part shows median section of the system.
- Internal organs (accessory organs) shown in great detail are epididymis, vas deferens, ejaculatory ducts, urethra, seminal vesicles, prostate gland and bulbourethral gland.
- External structures shown are penis, scrotum and testicles.
- Lower half shows the model of scrotum and contents along with the penis.
- 41 features marked.
- Key card / Manual provided.



ZX-1305 Human Reproductive System Female

- Price Rs. 5664.00
- 40x80 cm. • Made of HSP resin
- Upper half model shows both ovaries, left ovary in section, fallopian tubes with fimbriae, uterus, cut open vagina to show vaginal folds and cervix, bladder with cut open urethra, labia and rectum.
- Lower half model shows adnexa of uterus.
- 56 features marked.
- Key card / Manual provided.



ZX-1417PN Male Pelvis Section Diss. PVC



- Price Rs. 11800.00
- 30x22.5x27.5 cm • Made of PVC
- Dissectable in 4 parts
- Open through the medial sagittal section of male pelvis, this model shows the internal organs of urinary, male reproductive system and muscular anatomy
- Mounted on base.
- 26 features marked.
- Key card / Manual provided.

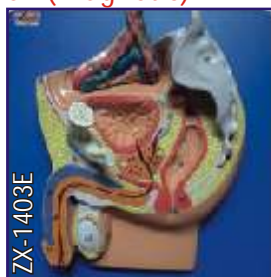
ZX-1418PN Female Pelvis Section Diss. PVC



- Price Rs. 11800.00
- 30x22.5x27.5 cm • Made of PVC
- Dissectable in 3 parts
- This model shows the urinary and female reproduction system along with muscular anatomy
- Half of the pelvis is shown, along with a removable attachment to see the outer reproductive organs
- Mounted on base.
- 27 features marked.
- Key card / Manual provided.

ZX-1403E Male Pelvis Small (Magnetic)

- Price Rs. 1593.00
- 25x25x8 cm. • Made of HSP resin
- Model is in 3 parts.
- Median section model shows male genital organs in normal position.
- Model is mounted on board.
- 36 features marked.
- Key card / Manual provided.



ZX-1404E Female Pelvis Small (Magnetic)

- Price Rs. 1593.00
- 25x25x8 cm. • Made of HSP resin
- Model is in 2 parts.
- Median section model shows female genital organs in normal position.
- Model is mounted on board.
- 31 features marked.
- Key card / Manual provided.



ZX-1441PN Female Uterus Ovary Model

- Price Rs. 3894.00
- Life size • Made of PVC
- It shows sectioned vagina, cervix, uterus, fallopian tubes and ovary with follicles.
- Mounted on a Stand.
- 23 features marked.
- Key card / Manual provided.



ZX-1445P Female Pelvic Anatomy Model

- Price Rs. 2596.00
- Size: 18x14x14.5 cm.
- Model is showing anatomy of median sagittal section of the female pelvis.
- Suitable for pharmaceutical promotion.
- Mounted on base.
- Key card / Manual provided.

EXCRETORY SYSTEM

**XC-331****Male Urogenital System**

- Price Rs. 3304.00
- This is intended to understand the external features of the kidney, urinary bladder, penis and testicle.
- Made of PVC Plastic.
- Size 20 x 20 x 50 cm.

**XC-332****Female Urogenital System**

- Price Rs. 3304.00
- It shows kidney, ureter, urinary bladder, vagina, ovary membrane, uterus, ligaments and artery etc.
- Made of PVC plastic.
- Size 20 x 20 x 50 cm.

**ZX-1407****Kidney**

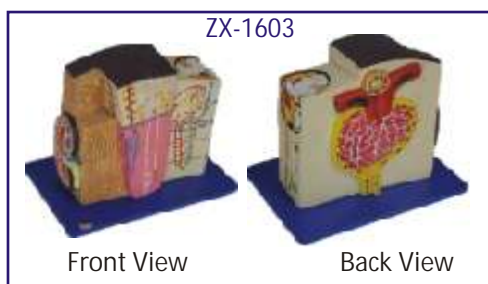
- Price Rs. 2537.00
- Size: 3x of life size.
- Made of HSP resin
- Shows a longitudinal section of the left kidney.
- Mounted on stand.
- 31 features marked.
- Key card / Manual provided.

**ZX-1303****Human Excretory System**

- Price Rs. 5664.00
- 40x80 cm • Made of HSP resin
- Delivered on wooden baseboard for easy display.
- It shows the structures of the retroperitoneal cavity which includes : descending aorta, inferior vena cava, renal veins and arteries, ureter, urinary bladder cut open to show trigone and other structures, adrenal glands, both kidneys, iliac vessels and prostate gland.
- Left kidney and left adrenal gland in section.
- Model also shows testis and penis in section.
- The model has anatomical details that makes it a great teaching aid.
- 36 features marked.
- Key card / Manual provided.

**ZX-1513P****Kidney Pathologies Model**

- Price Rs. 3953.00
- Size: 15 x 9 x 3 cm.
- It shows pathological complications of a kidney like infection, scarring, atrophy, urinary (kidney) stones, tumors, polycystic disease and hypertension on one side.
- The other side shows a normal kidney features.
- Mounted on base.
- Key card / Manual provided.

**ZX-1603****Kidney Microstructure**

- Price Rs. 5310.00
- 30x20x24 cm • Made of HSP resin
- Beautifully painted in advanced colours.
- A complete 3-D model shows 5 sides view of following structures in great details : kidney in section, parenchyma of kidney and nephron, renal corpuscle and associated structures, loop of henle and associated structures.
- Mounted on sturdy wooden base.
- 45 features marked.
- Key card / Manual provided.

**XC-310-3****Human Kidney with Adrenal Gland**

- Price Rs. 3068.00
- Life-size model features the kidney, adrenal gland, renal and adrenal vessels and upper portion of the ureter.
- Dissectible into 2 parts to reveal the cortex medulla, cortex vessels and renal pelvis.
- Model can be removed from the stand for instruction and patient education.
- Size: 12.5 x 12.5 x 20 cm.

**ZX-S333P****Urinary System Block Model Dual Sex, 6 Parts**

- Price Rs. 15222.00
- Life Size • Made of PVC
- Mounted on stand. • Dual sex
- It shows components of urinary system, posterior abdomen wall, kidney, adrenal gland & bladder.
- It also shows pelvic bone and muscles, Inferior vena cava, aorta with its branches including iliac vessels and Rectum.
- One front half of a kidney is removable
- Key card / Manual provided.

BRAIN & NERVOUS SYSTEM



XC-308 Brain with Arteries

- Price Rs. 3304.00
- Made of PVC plastic.
- Dissectible into 8 parts. On base.
- Natural size: 18.5×14×13.5cm.
- External features of the brain: cerebral hemisphere, brain stem, cerebellum.
- The arterial supply of the brain: sources, vertebral, internal carotid arteries, arterial supply of the cerebellum and cerebrum.



XC-318 Brain With Arteries on Head

- Price Rs. 6962.00
- This model shows the brain structure inside the skull. Two halves brains can be disassembled into: frontal with parietal lobes, temporal with occipital lobes, half of brain stem, half of cerebellum.
- Life-size, dissectible into 9 parts.



ZX-1422PN

Brain Model Deluxe Enlarged 4 parts

- Price Rs. 18408.00
- Size : 1.5 times enlarged
- Made of PVC
- Dissectable in 4 parts
- Showing the temporal and occipital lobes, the frontal & parietal lobes, the cerebellum, the brain stem in different colors.
- Mounted on metal stand with wooden base.
- 142 features labeled & relevant descriptive names written directly on model.
- Key card / Manual provided.



ZX-1610E Reflex Arc

- Price Rs. 2596.00
- 30x40x3 cm.
- Made of HSP resin
- The model shows sensory, neural & motor elements of a complete reflex arc.
- Mounted on sturdy wooden base.
- 22 features marked.
- Key card / Manual provided.



ZX-1317PN

Nervous System Model PVC

- Price Rs. 18880.00
- Size : Half size
- Made of PVC
- Well illustrated and informative
- Beautifully painted in bright colors
- Model is accurately made from actual specimen references, photographs and encyclopedia reference under expert guidance.
- Model is great teaching tool for anatomy lessons.
- Mounted on base.
- 33 features marked.
- Key card / Manual provided.



ZX-1307

Human Nervous System

- Price Rs. 5664.00
- Half life size
- Made of HSP resin
- Model is a schematic representation of the central and peripheral nervous system, including spinal nerves radiated from central nervous system to other parts of body.
- Mounted on wooden base board.
- 39 features marked.
- Key card / Manual provided.



ZX-1602 Neuron

- Price Rs. 4307.00

- 30x20x12 cm
- Made of HSP resin.
- Motor neuron model in three-dimension.
- Model shows branching dendrites, myelin-wrapped axon and node of Ranvier.
- Removable axon section shows cytological ultra structure, layers of myelin sheath, neurolemma and schwann cell.
- 19 features marked.
- Key card / Manual provided.

CPR MANIKINS

MB001B+ (AD)



MB001B+ (AD)

CPR Training Manikin Advance (Torso)

- Price Rs. 21240.00

- Features and Function:
- Two in one simulator - Adult/Child
- Exclusive three position selector dial
- Breathing function : Real-like system
- Jaw thrust maneuver
- AED compatible (AED not included)
- Ultra hygienic
- Unique one-way valve
- Realistic opening of airway
- Clicking sound to check correct compression depth
- Accessories include Travel Bag.

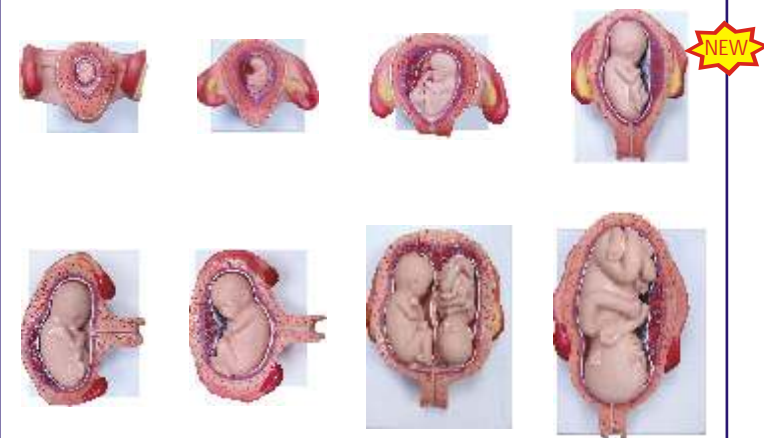
MB001 (AD) CPR Training Manikin Advance (Torso)

- Price Rs. 19470.00

- MB001 (AD) same above but without Travel Bag.

GYNAE & OBSTETRIC MODLES

ZX-S414H



ZX-S414H

Fetal Development Model set of 8

- Price Rs. 26550.00

- Size : Half size
 - Made of PVC
 - Each model mounted on separate base.
 - Shows the development from ovum to the fetus in 7th month.
- | | |
|---------------------------------------|--|
| A: 1st Month Embryo | E-I: 5th Month Foetus (Transverse Lie) |
| B: 2nd Month Embryo | E-II: 5th Month Foetus (Transverse Lie) |
| C: 3rd Month Embryo | E-III: 5th Month Twin Foetuses (Normal Position) |
| D: 4th Month Foetus (Breech Position) | F: 7th Month Foetus |
- Key card / Manual provided.

ZX-1706PN Human Embryo Model, Enlarged (Four weeks old)



- Price Rs. 3540.00

- Size : 25 times enlarged
- Made of PVC
- 20 parts labeled in total.
- Well illustrated and informative.
- Great for studying human development and having as a desktop model for quick reference and for education.
- Key card / Manual provided.

ZX-1700PN Human Placenta Model with Cord



- Price Rs. 5546.00

- Size : Life size
- Made of PVC
- It shows structure of placenta from maternal & fetal side both.
- It also shows the relation between placenta and umbilical cord.
- Umbilical cord clearly shows umbilical vessels
- Maternal side: shows dark maroon structure of the decidua featuring the cotyledons
- Fetal side: reveals the amnion (amniotic membrane) partially removed, exposing the intervillous space.
- 8 features marked.
- Key card / Manual provided.

DENTAL MODELS



ZX-1427



ZX-1427

Teeth Care Model Enlarged with Giant Teeth Brush

- Price Rs. 3422.00
- 15x16x22cm, 3 x Life size
- Made of PVC
- Model shows complete set of teeth with gums & tongue.
- A flexible joint between the jaws allows easy movement.
- Key card / Manual provided.



TH002

TH002

Dental Model Small

- Price Rs. 2006.00
- 1.5 × Model with Hinge.



ZX-1442

ZX-1442

Dental Model Life Size

- Price Rs. 590.00

- Life size
- It shows the upper & lower jaw hinged with rod & screw.
- 28 fixed non removable teeth shown.
- Key card / Manual provided.



ZX-1411

ZX-1411

Dental Care Model

- Price Rs. 2183.00
- Highly enlarged dental model with normal tooth brush.
- Size : 22x16x15 cm.



ZX-1443

ZX-1443 Dental Practice Typodont Model

- Price Rs. 5015.00

- Life size
- 28 removable teeth in this model.
- Students will be able to practice preparing the teeth for restoration, whether that is cavity fillings, crowns, or bridges.
- The model features plastic teeth screwed with metal screws in place, soft gingiva, and a soft palate. One crosshead mini screwdriver is provided to remove the teeth.
- A metal hinge holds the top and bottom jaws together.
- Key card / Manual provided.



ZX-1512P



ZX-1512P Dental Caries Model

- Price Rs. 3953.00

- Size: 4 times enlarged
- Shows cavities in 3 molars removable from gum sockets.
- Each molar is longitudinally sectioned in 2 parts.
- 3 progressive stages of cavities (shallow, medium and deep) are shown, one in each molar.
- Morphological structure of the molar tooth is well depicted.
- Key card / Manual provided.

BUILD YOUR ANATOMY MODELS

- New Type of Puzzle
- Highly Detailed Finish
- Collectible Quality
- Dissectable in Small Parts
- Display Stand



SK007

SK007

Eyeball Anatomy Model

- Price Rs. 2065.00
- Size 14 cm
- 35 pieces set.

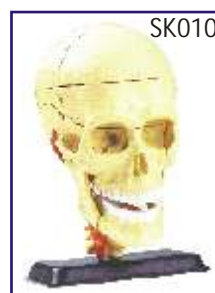


SK009

SK009

Heart Anatomy Model

- Price Rs. 2065.00
- Size 14 cm
- 31 pieces set.



SK010

SK010

Cranial Nerve Skull Anatomy Model

- Price Rs. 2065.00
- Size 9 cm
- 39 pieces set.

HISTOLOGY AND BIOMOLECULES MODELS



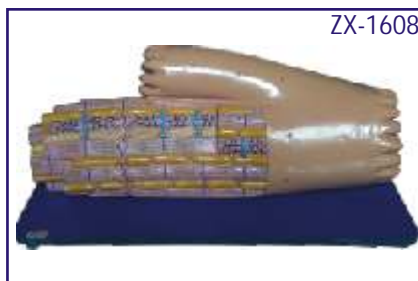
ZX-1613 DNA Model

- Price Rs. 3068.00
- Stands 40cm tall
- Made of Plastic
- Mounted on stand.
- 18 layers, 9 each of AT& GC.
- Handy demonstration model of DNA helix.
- Parts are colour coded and represent purines, pyrimidines, deoxyribose & phosphate groups that make up the double helix of DNA.
- Model is great teaching tool.
- Key card / Manual provided.



DN001 DNA Model Kit

- Price Rs. 2183.00
- Made of Plastic.
- Ready to assemble model.
- Size: 10 × 10 × 45 cm.



ZX-1608 Cardiac Muscle Fibre

- Price Rs. 3186.00
- Block model is greatly enlarged cardiac muscle fibre.
- The model shows significant anatomical structures such as sarcolemma, nucleus, mitochondria, transverse tubules, cardiomyocytes, sarcoplasmic reticulum, intercalated disc, M line, Z disc & various filaments.
- Mounted on durable wooden base.
- Size: 41 x 20 x 19 cm
- 17 parts labeled in total.

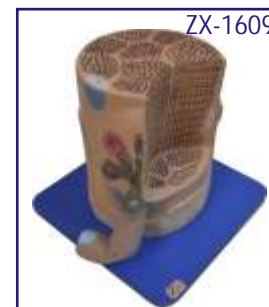
ZX-1609 Skeletal Muscle Fibre

- Price Rs. 3068.00
- Block model is greatly enlarged model of skeletal muscle fibre.
- Model shows various anatomical structures like neuromuscular junction. T tubules, myofibrils, bands, nucleus etc.
- Mounted on wooden base.
- Size: 20 x 20 x 19 cm
- 21 parts labeled in total.



ZX-1607 Smooth Muscle Fibre

- Price Rs. 3186.00
- Block model is a greatly enlarged smooth muscle fibre.
- The model shows significant structures including sarcoplasm, nucleus, mitochondria, dense body, filaments, autonomic neurons and gap junction.
- Size: 36 x 25.5 x 13 cm
- 18 parts labeled in total.



ZX-3101 Animal Cell Model

- Price Rs. 2950.00
- Made of high grade synthetic polymer having long durability.
- Delivered with removable stand.
- Size: 30x40x10 cm.
- Well illustrated & informative.
- 19 features marked.
- Beautifully painted in bright colors.



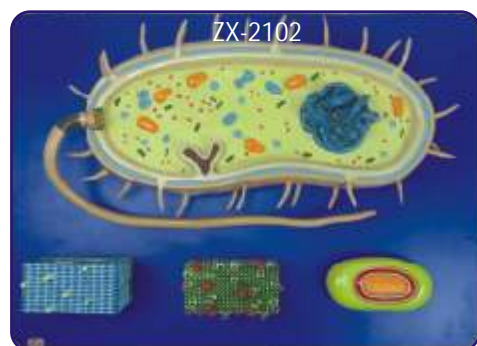
ZX-2100 Chloroplast

- Price Rs. 6726.00
- Block model is highly enlarged open section of a typical chloroplast.
- Model shows inner & outer membranes, granum, stroma, DNA, starch granule, Osmiophilic globule and thylakoids.
- Mounted on sturdy wooden base.
- Size: 36 x 25.5 x 19 cm.
- 13 features marked.



ZX-2101 Mitochondria

- Price Rs. 2655.00
- Block model is highly enlarged open section of typical mitochondria.
- Model shows outer and inner membranes, cristae, ribosomes, matrix, mitochondrial DNA, etc.
- Mounted on sturdy wooden base.
- Size: 41 x 21 x 13 cm.
- 10 features marked.

**ZX-2102 Bacterium**

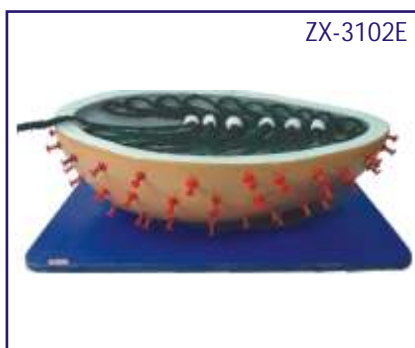
• Price Rs. 6726.00

- Model is greatly enlarged bacterium model depicting anatomical complexity of a general prokaryotic cell.
- The model is a set of 4 models including block models of the cell wall of gram positive and gram negative bacteria, opened bacterial spore showing spore coat & internal structures and main bacterium.
- Mounted on sturdy wooden base. • Size : 55x40x9.5 cm.
- 34 features marked.

**ZX-3100E AIDS VIRUS**

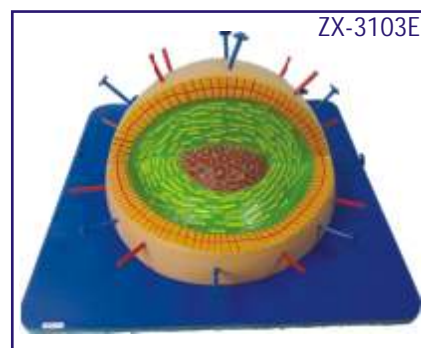
• Price Rs. 1770.00

- Highly enlarged detailed model of HIV (Human Immunodeficiency Virus) commonly called AIDS virus.
- Model shows outer lipid membrane with protein structures, internal nucleus with viral RNA.

**ZX-3102E Rabies Virus**

• Price Rs. 3304.00

- Model of rabies virus is enlarged millions of times to show viral RNA, lipid envelope, glycoprotein, polymerase etc.
- Mounted on wooden base.
- Size : 35x25x10 cm.
- 6 features marked.

**ZX-3103E Influenza Virus**

• Price Rs. 3304.00

- This millions of times enlarged model of influenza virus shows lipid envelope, capsid, nucleoprotein, hemagglutinin and neuraminidase.
- Mounted on wooden base.
- Size : 35x35x16 cm.
- 5 features marked.

Covid-19 Products

We provide **REOPENING SOLUTIONS** for institutions after Covid-19:

- Covid-19 safety instruction charts
- Disinfectants and fogging machines
- Floor mats - for sanitising shoes at entry point
- Hand sanitisers - Alcohol free
- Sanitiser dispensing machines
- Face shields and safety goggles
- U. V. sterilisation chambers



Hygiene products are available with us



Sanitiser



Disinfectant



Floor Mats



Charts



Sanitiser Dispenser



Please ask for separate catalogue of above articles

TELESCOPE & BINOCULAR

TELESCOPE (F70060)

- Price Rs. 6490.00
- Objective dia : 60 mm
- Coated Lens
- Aluminium tripod
- 1.5x & 3x Barlow lens
- Focal length : 700 mm
- Eyepiece : 20mm/12.5mm/4mm
- Magnification : 35x/56x/175x



10 x 50MM BINOCULARS (BN1050)

- Price Rs. 3540.00



- 10x magnification
- Focussing Knob
- Neck strap
- Eye piece with rubber coating
- 50mm dia objective
- Rubber covered body
- Superior Lenses

ROCKET MODELS

ZX-4100E

ROCKET MODEL

- Price Rs. 1475.00
- Small size. Height 44 cm.



ZX-4101E

ROCKET MODEL

- Price Rs. 2006.00
- Large size. Height 71 cm.

SCIENCE TEACHING KITS

CS015 STUDENT BALANCE KIT

- Price Rs. 1298.00

- 4 x Weights
- 4 x Arms
- 2 x Weighing pans
- 2 x Levers
- 2 x Triangle axials
- 2 x Pointers
- 2 x Scales
- 1x Central Axial
- 1x Pivoted weight
- 2 x Arms side holders



TK7074

Age 8+



TK7074 Go Weather

- Price Rs. 3363.00

- Over 30 fascinating activities all about weather and climate.
- Kit includes a real wind speed indicator.
- Build your own barometer, weather vane, rain gauge and hydrometer.
- Observe the weather traits and see how they'll affect tomorrow's weather!
- Make a rainbow, produce clouds, lightning, rain and even a thunderstorm



AM001 ATOMIC MODEL SET SUPERIOR

- Price Rs. 7788.00

- The set consists of moulded balls and sticks of different colours and size arranged in different size lugs.
- The set is very helpful in modelling different compounds with the help of given keycard.
- Box size : 51 x 39 x 7 cm.

TK4003

Age
8+**TK4003 Wake Me Robot**

• Price Rs. 2596.00

- Place it next to your bed at night.
- In the morning when light falls on it, the robot will start to move and buzz.
- Easy to assemble - no soldering required.

TK8405

Age
10+**TK8405 Solar Power**

• Price Rs. 4720.00

- 150 Challenging Experiments.
- Build a solar electric generator, motor, water heater, furnace, thermometer, crane and solar energy mobiles.
- Unique experiments with colour optics, electroplating, stroboscopes, thermodynamics and Moire patterns.

TK8740

Age
8+**TK8740 Hydrolab**

• Price Rs. 5074.00

- Complete greenhouse system for cultivating plants and vegetables in an "indoor" environment, without soil, using a modern Hydroponics system.
- Kit comes with a base, fertilizer tank, adjustable translucent observation cover, 4 growing trays, safe chemicals & bedding for propagating growth of plants.

TK8360

Age
10+**TK8360 Super Chem 150**

• Price Rs. 4602.00

- 150 exciting science activities using only products found in the kitchen.
- There are over forty pieces of equipment enabling you to carry out all of the 150 activities.
- These activities include the following science phenomena: chemistry, optics, bubbles, magnetism, physics and chromatography.
- The kit includes an attractive four colour book.

TK8650

Age
10+**TK8650 Ecology**

• Price Rs. 4543.00

- 150 Experiments dealing with ecology.
- Topics include bacteriology, climate, water, air, nature, chemical analysis, water and soil pollution, recycling and acid rain.
- Understand the problems & improve the environment.

TK8950

Age
10+**TK8950 Energy**

• Price Rs. 5251.00

- More than 200 experiments.
- Kit gives an understanding of the various kinds of energy sources, how to transform them and use them.
- Learn about windmills, levers, solar energy, batteries, electricity, electrochemistry and more.
- Make your own simple machines.

COMMUNITY HEALTH MODELS

- Made of high grade materials having long durability
- Mounted on sturdy wooden frame for easy display
- Supplied with well illustrated informative literature

- Well labeled parts
- Beautifully painted in bright colors
- Model is a great teaching tool for nursing students

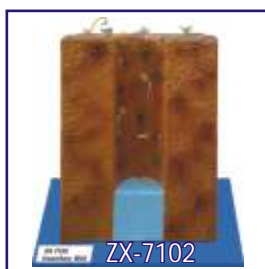
COMMUNITY HYGIENE

ZX-7101 - Sanitary WellPrice Rs. 6490.00
 ZX-7102 - Insanitary WellPrice Rs. 6490.00
 ZX-7103 - Deep and Shallow WellPrice Rs. 6490.00
 ZX-7104 - Deep Tube WellPrice Rs. 7670.00

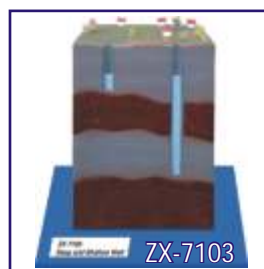
ZX-7105 - Step WellPrice Rs. 7670.00
 ZX-7106 - Berkefeld FilterPrice Rs. 6490.00
 ZX-7107 - Slow Sand FilterPrice Rs. 8260.00
 ZX-7108 - Rapid Sand FilterPrice Rs. 7080.00



ZX-7101



ZX-7102



ZX-7103



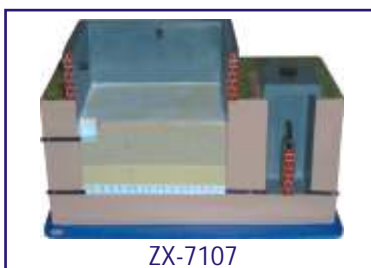
ZX-7104



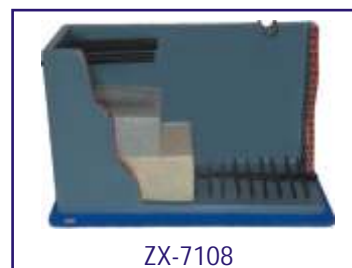
ZX-7105



ZX-7106



ZX-7107



ZX-7108

ENVIRONMENTAL SANITATION

ZX-7201 - House Drainage SystemPrice Rs. 8260.00
 ZX-7202 - Chamber Type IncineratorPrice Rs. 8260.00
 ZX-7203 - Activated Sludge ProcessPrice Rs. 8260.00
 ZX-7204 - Bore Hole LatrinePrice Rs. 6490.00
 ZX-7205 - Dug Well Latrine (Pit Latrine)Price Rs. 6490.00

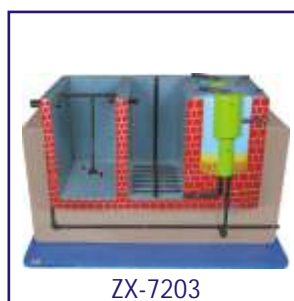
ZX-7206 - Trench LatrinePrice Rs. 7080.00
 ZX-7207 - Septic Tank LatrinePrice Rs. 7670.00
 ZX-7208 - Biogas PlantPrice Rs. 8260.00
 ZX-7209 - Smokeless ChulhaPrice Rs. 7670.00



ZX-7201



ZX-7202



ZX-7203



ZX-7204



ZX-7205



ZX-7206



ZX-7207



ZX-7208



ZX-7209

SCIENCE WORKING MODEL

PHYSICS



PH 1014 S
Working of Switch - DIY
Price Rs. 456.00



PH 1036 C Conductor and
Insulator - DIY
Price Rs. 456.00



PH 1013 S Mag. Spring /
Repulsion of Magnets -DIY
Price Rs. 162.00



PH 1034 T Make Your
Own Sundial - DIY
Price Rs. 506.00



PH 1003 S
Levitation of Pencil - DIY
Price Rs. 292.00



PH 1042 C
Yarn Spindle - DIY
Price Rs. 188.00



PH 1043 S Fibre to Fabric - DIY
Price Rs. 649.00



PH 1008 S
Working of LED - DIY
Price Rs. 122.00



PH 1019 S Uses of
Pulley In Our Life - DIY
Price Rs. 363.00



PH 1007 S
Day and Night - DIY Kit
Price Rs. 545.00



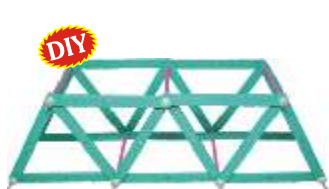
PH 1025 S Infinite Images
(Parallel Mirrors)- DIY
Price Rs. 220.00



PH 1044 S Make Your
Own Compass - DIY
Price Rs. 175.00



PH 1045 C Multi Circuit
Panel Board - DIY
Price Rs. 2,088.00



PH 1046 C Make Your
Own Bridge - DIY
Price Rs. 259.00



PH 1021 T Bernoulli Bag
(Capacity of Lungs) - DIY
Price Rs. 103.00



PH 1086 S
Elastic Powered Boat - DIY
Price Rs. 220.00



PH 1047 C Electricity and
Magnetism Kit - DIY
Price Rs. 1,732.00



PH 1048 S Electromagnet
Making Kit
Price Rs. 456.00



PH 1049 S Electromagnetic
Repulsion - DIY
Price Rs. 546.00



PH 1016 C Mixing of Col.
& White Light Formation
Price Rs. 613.00



PH 1018 C
Ray Box (Lenses Kit)
Price Rs. 1,457.00



PH 1050 C
Anemometer - DIY
Price Rs. 292.00



PH 1015 S
Reflection of Light Kit - DIY
Price Rs. 324.00



PH 1051 T
Mag. Levitation
& Maglev Train - DIY
Price Rs. 681.00



PH 1052 T Working
Model of Tornado - DIY
Price Rs. 1,512.00



PH 1053 S Kaleidoscope
Making Kit - DIY
Price Rs. 175.00



PH 1037 T
Conduction Of Heat - DIY
Price Rs. 188.00



PH 1005 S Frictionless
Propeller Kit - DIY
Price Rs. 259.00



PH 1054 S Wind Powered
Crane - DIY
Price Rs. 103.00



PH 1010 S
Airfoil Designs
& Shapes - DIY
Price Rs. 116.00



PH 1024 S Calculate. no.
of Reflection-DIY
Price Rs. 149.00



PH 1017 S Centrifugal
Force in The Earth Kit - DIY
Price Rs. 307.00



PH 1029 S Air Pressure &
Atomic Pressure - DIY
Price Rs. 43.00



PH 1033 T Static
Electricity Kit - DIY
Price Rs. 90.00



PH 1055 C Hydraulic Arm - DIY
(without bottle)
Price Rs. 376.00



PH 1039 T RGB DIY Kit
Price Rs. 756.00



PH 1056 S
Air Powered Car - DIY
Price Rs. 506.00



PH 1030 S Wind Mill
DIY Kit (Air Pressure)
Price Rs. 395.00



PH 1011 T
Density of Material Kit
Price Rs. 381.00



PH 1012 S Sprinkler - DIY
Price Rs. 77.00



PH 1057 T
Lever And Fulcrum Fn. Kit - DIY
Price Rs. 2,658.00



PH 1022 S Properties of
Air Kit - DIY
Price Rs. 77.00



PH 1020 S
Working of Rope Way - DIY
Price Rs. 292.00



PH 1058 S
Electric Propeller Boat - DIY
Price Rs. 456.00



PH 1006 S Working
Model of Gyroscope
Price Rs. 456.00



PH 1031 S
Balloon Car - DIY
Price Rs. 149.00



PH 1059 T
Twin Pendulum - DIY
Price Rs. 1,363.00



PH 1060 T Up Hill Cone (Small) - DIY
Price Rs. 307.00



PH 1061 C Motion Car
Price Rs. 756.00



PH 1062 T Working Model
of Trebuchet - DIY
Price Rs. 363.00



PH 1063 C Sound and
Vibration Kit - DIY
Price Rs. 149.00



PH 1001 S
Magnetic Gun - DIY
Price Rs. 545.00



PH 1027 S Buoyancy &
Archimedes Principle - DIY
Price Rs. 434.00



PH 1004 T
Maxwell's Wheel
Price Rs. 1,137.00



PH 1040 T
Heating Effect
From Electricity - DIY
Price Rs. 220.00



PH 1064 C
Series Connection - DIY
Price Rs. 456.00



PH 1069 T Total Internal
Reflection Kit - DIY
Price Rs. 220.00



PH 1070 T
Tesla Coil
Price Rs. 518.00



PH 1074 C
Syringe Generator
Price Rs. 272.00



PH 1071 S
Toy Telescope
Price Rs. 58.00

Similar to above, following DIY
kits are also available:

PH 1065 C Resistance In Series and
Parallel Price Rs. 456.00

PH 1066 C Working of A Resistance
Price Rs. 606.00

PH 1067 C Variable Resistance
Graphite Price Rs. 606.00

PH 1068 C Magnetism From
Electricity Price Rs. 606.00

PH 1076 C Parallel Connection
Price Rs. 545.00

LIGHT AND OPTICS CLASS DEMO KIT

Magnetic Featured Ray Box And Blocks

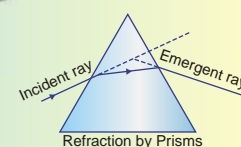
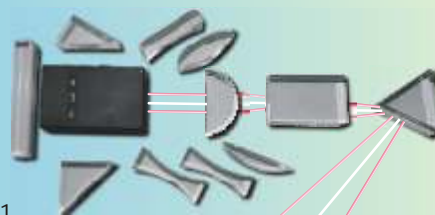
This light and optics kit is a very handy tool for science teachers. It demonstrates the laws of reflection and refraction.

Product Code: PH 1092 C Price Rs. 2,590.00

The kit consist of:

- Ray box-1
- Convex lenses-4
- Concave lenses-3
- Slab-1
- Prisms-3
- Rectangular light block-1

The ray box can project 3 beam of light in 2 colours
Supplied with teacher's support guide



DIY



PH 1072 T
Hand Generator
with Pulley - DIY
Price Rs. 545.00

DIY



PH 1087 C
Pulley System - DIY
Price Rs. 434.00



PH 1075 T
Solenoid Engine
Price Rs. 1,969.00



PH 1077 C
Solar Reading Lamp
Price Rs. 988.00

DIY



PH 1041 T Electric
Motor Kit - DIY
Price Rs. 381.00

DIY



PH 1028 S Potential Energy
In Twisted Elastic- DIY
Price Rs. 220.00

DIY



PH 1078 T
Catapult - DIY
Price Rs. 610.00



PH 1002 T
Hydraulic Jack
Price Rs. 1,970.00



PH 1081 T
Eddy Current in
An Aluminium Tube
Price Rs. 1,512.00



PH 1079 T
Hydraulic Arm Lift
Price Rs. 1,354.00

DIY



PH 1080 S
Screw Jack - DIY
Price Rs. 506.00

DIY



PH 1035 T
Capillary Action - DIY
Price Rs. 184.00



PH 1082 T
Magnetic Brake
Price Rs. 1,670.00



PH 1083 T Magnetic
Induction Pendulum
Price Rs. 988.00



PH 1084 T
Charkha Generator
Price Rs. 3,025.00

DIY



PH 1023 S Newton's III Law
(Amphibian Car) - DIY
Price Rs. 585.00



PH 1088 T
Fidget Generator
Price Rs. 1,512.00

DIY



PH 1089 C
Magic RGB Cubes - DIY
Price Rs. 940.00



PH 1090 C
Gear Driven Generator
Price Rs. 1,451.00



PH 1091 C Solar Motor
/Mendocino Motor
Price Rs. 2,875.00

FUN SCIENCE KITS

DIY



FN 15002 S
Slime Kit - DIY
Price Rs. 434.00

DIY



FN 15003 S
Soap Making Kit - DIY
Price Rs. 649.00

DIY



FN 15001 S
Snow Making Kit - DIY
Price Rs. 363.00

DIY



FN 15004 S
Magic Sand - DIY
Price Rs. 389.00

DIY



FN 15005 S
Bike on Rope - DIY
Price Rs. 318.00

CHEMISTRY



CH 110 T
Chromatography - DIY
Price Rs. 129.00



CH 103 S Fats, Protein &
Carbohydrates Testing Kit- DIY
Price Rs. 428.00



CH 114 S
Budding Crystal
Kit - DIY
Price Rs. 77.00



CH 109 S
What Is Litmus &
Indicator - DIY
Price Rs. 531.00



CH 107 S
What Is pH Scale - DIY
Price Rs. 220.00



CH 111 S
Chemical Reaction
Price Rs. 122.00



CH 115 C Lemon Battery - DIY
(without multimeter)
Price Rs. 188.00



CH 116 C
Inflate Balloon - DIY
Price Rs. 149.00



CH 112 C
Water Filter Kit - DIY
Price Rs. 519.00



CH 113 T
Electroplating - DIY
Price Rs. 381.00



CH 117 S
Fireproof
Balloons - DIY
Price Rs. 259.00



CH 118 T Chemical Reac.
(Elephant Toothpaste)-DIY
(without bottle)
Price Rs. 188.00



CH 101 S
Density of
Liquids Kit - DIY
Price Rs. 116.00



CH 102 S Miscible
and Immiscible
Liquids Kit - DIY
Price Rs. 116.00



CH 119 S
Rapid Oxidation
Kit - DIY
Price Rs. 220.00



CH 105 S
Properties of
Carbon Dioxide - DIY
Price Rs. 77.00



CH 120 T
Solutions, Suspensions
& Colloids - DIY
Price Rs. 381.00



CH 106 S
What Are Common
Acid & Bases - DIY
Price Rs. 220.00



CH 108 S Acid Base
Reaction CO₂ - DIY
Price Rs. 279.00



CH 104 S Acid Bases &
Their Properties - DIY
Price Rs. 272.00



CH 121 C Prod. of Hydrogen
& Oxygen - DIY
Price Rs. 428.00

3 DIMENSIONAL INTERACTIVE PERIODIC TABLE

Product Code: CH 122 C Price Rs. 12100.00

- Wall mountable
- Detachable element cubes
- 118 Cue cards for teachers
- Colour codes depict the state of elements.
- Below characteristics are depicted on each side of cube:-
 - Element symbol
 - Atomic number
 - Element name
 - Electron structure
 - Atomic weight
 - Electronegativity



- Real life co-relation of elements
- Teacher's hand book
- Size: 103x65 cm

BIOLOGY



BG 10001 T
Body Movements DIY Kit
Price Rs. 1,038.00



BG 10004 S
Study of Seed Germination - DIY
Price Rs. 207.00



BG 10003 C Types of Food We Eat - DIY
Price Rs. 233.00



BG 10002 T Resp. Sys. In Human Being - DIY
Price Rs. 363.00

ROBOTICS



RT 20001 C
Robo Air Car - DIY
Price Rs. 1,363.00



RT 20002 C
Wind Power Dynamo - DIY
Price Rs. 1,519.00



RT 20003 C
Gear Motor Car - DIY
Price Rs. 1,697.00



RT 20004 C
Fluid Turbine - DIY
Price Rs. 1,363.00



RT 20005 C Wind Mill - DIY
Price Rs. 483.00



RT 20006 C Robo Car - DIY
Price Rs. 1,588.00



RT 20007 C
Robo Conveyor Machine - DIY
Price Rs. 1,812.00



RT 20008 C Solar Car - DIY
Price Rs. 1,451.00



RT 20009 C Industrial Lift Gear Model - DIY
Price Rs. 1,588.00



RT 20010 C
Tank With Robotic Arm
Price Rs. 9,969.00



RT 20011 C IR-VR Sensor Robo Car - DIY
Price Rs. 1,588.00



RT 20012 C Sound and LDR Based Robo Car - DIY
Price Rs. 2,044.00

VISUAL TEACHING AIDS

OPTIONAL ACCESSORIES

OA01	Projection Screen 70"×52" (175 × 130 cms) with folding tripod stand.....	Each Rs. 4720.00
OA02	Projection Screen 60"×60" (150×150 cms) with folding tripod stand.....	Each Rs. 4720.00
OA03	Projection Screen 90"×72" (225×180 cms) with folding tripod stand.....	Each Rs. 10620.00
OA04	Map Screen made of thick white rexine with roller 175×130 cms.....	Each Rs. 2596.00
OA11	Overhead Projector marker set of 7 pens including Eraser Pen.....	Per set Rs. 605.00
OA12	Blank Overhead Projector Transparencies - 210×297 mm. Packet of 100 sheets.....	Per Pkt Rs. 708.00
OA21	Bulb for OHP 24v-250W.....	Each Rs. 295.00
OA22	Bulb for Slide Projector 24V-150W.....	Each Rs. 295.00
OA32	Laser Pointer Pen type with button cells.....	Rs. 531.00

OVERHEAD PROJECTOR TRANSPARENCIES

• Price per transparencies Rs. 64.00

• Available in set only

OT01	Botany set of 75	OT09	Chemistry set of 40
OT02	Zoology set of 75	OT10	Human Physiology set of 50
OT08	Physics set of 50	OT13	First Aid set of 50



2"×2" COLOURED 35 mm SLIDES HEALTH SECTION

• Price per slide Rs. 22.50

• Available in set only

HEALTH CARE

each set contain 20 slides

SHC01	Health Rules
SHC02	Causes of Diseases
SHC03	Prevention of Diseases
SHC04	Effects of Alcohol

SHC05	Tobacco & Habit Forming Drugs
SHC06	Clean Body
SHC07	Clean Water
SHC08	Constituents of Food
SHC10	Immunization

OTHERS

SH01	Human Physiology set of 50
SH03	Yogasan set of 20
SH07	First Aid set of 50
SH09	Mothercraft set of 30
SH13	Community cleanliness set of 8

ZOOLOGY SECTION

• Price per slide Rs. 22.50

• Available in set only

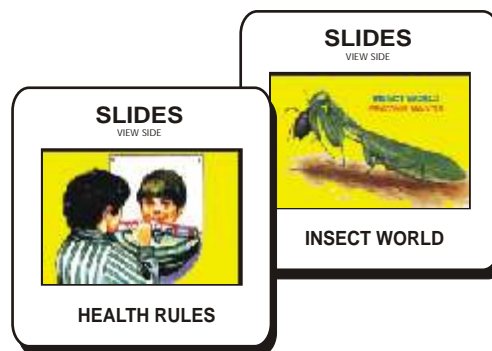
SZ03	Amoeba & Paramecium set of 20
SZ05	Animal Kingdom set of 30
SZ07	Beaks & Feet of Birds set of 20
SZ10	Earthworm set of 20
SZ11	Chick Embryology set of 20
SZ12	Frog Embryology set of 15
SZ13	Rabbit Embryology set of 20
SZ14	Evidence of Evolution set of 20
SZ19	L.H. Butterfly set of 10
SZ21	L.H. Housefly set of 10
SZ22	L.H. Mosquito set of 10
SZ23	L.H. Silkworm set of 10
SZ26	Meiosis set of 15
SZ28	Mitosis set of 10
SZ29	Prehistoric Animals set of 20
SZ32	Snakes set of 20

BOTANY SECTION

• Price per slide Rs. 22.50

• Available in set only

SB03	Bacteria set of 20
SB06	Dispersal of Seeds set of 20
SB09	Germination of Seeds set of 20
SB16	Meiosis set of 15
SB17	Mitosis set of 10
SB20	Plant Kingdom set of 30
SB22	Pollination set of 10
SB23	Roots set of 20
SB25	Stems set of 20
SB27	Water Plants set of 10
SB28	Botany set of 30



SPECIAL SLIDES

SSS04	Histology set of 100	Rs. 2950.00
SSS05	Pathology set of 100	Rs. 2950.00
SSS06	Chemistry Album for 10+2 set of 100	Rs. 2596.00
SSS07	Physics Album for 10+2 set of 100	Rs. 2596.00
SSS09	Human Physiology set of 100	Rs. 2596.00

BIO VIEWERS

BV01 Slide viewer for Viewing Slides in available light

Rs. 767.00

Biostrips are available on various subjects. Biostrips can be prepared on any subject (Minimum quantity 50 each title).

INDIAN SCHOOL SYLLABUS ON VIDEO

From Hazel Dolbrien of the U.K. Any one CD Rs. 354.00

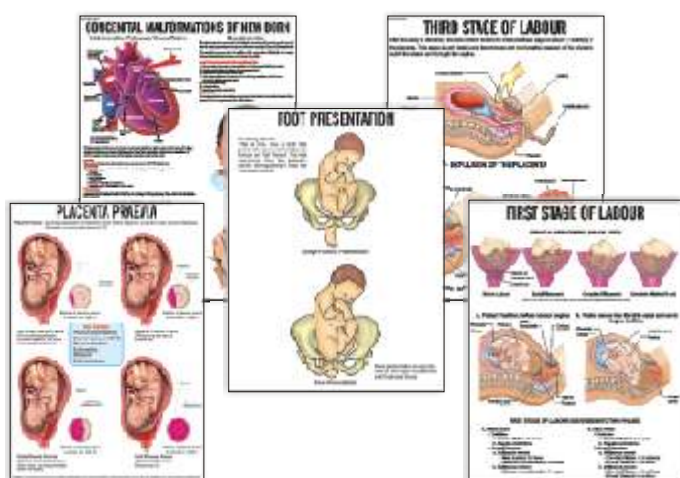
BIOLOGY			PHYSICS		
Code	Title	Time (in mins.)	Code	Title	Time (in mins.)
E01	Sleepy Heads, Amoeba, Protista.	41	E22	Light, Measurement of Acceleration of Gravity, Very Low Temperature, Reflection, Refraction & Polarisation of Light.	53
E02	How Insects Develop Part -I & II, Life of the Forest.	49	E23	Photoelectric Effect, prelude to Power, Refraction, Reflection & Scattering of Light	51
E03	What are Cells, Role of the Cell Membrane, Peripheral Nervous System.	57	E24	Dioxide Characteristics, Power, heat as a Radiant Energy.	42
E04	The Woods, Woodlands: Plant Movements, What is Autumn, What is Spring.	52	E25	Buoyancy, Vibrations, learning about Sound.	51
E05	About Your Body, Tissues of the Human Body, Body Fights Diseases.	43	E26	Magnetism part-I, II & III.	49
E06	How Seeds are Scattered, Dispersal of Seeds and Fruits, How Seeds Grow.	52	E27	Friction, Colour from light, magnetism, Magnets & their uses.	40
E07	Life Cycle of Insects Part -I & Part -II, life story of the Earthworm, food feeding habits.	47	E28	Conquest of the atom, X-Ray Diffraction, Principles of Nuclear Fission.	55
E08	Process of Pollination, Germination & Growth of plants, Life Cycle of Flowering Plants, Animals Breathe in many ways.	54	E29	Electricity (Fundamentals), pressure & Current, Electrical sources.	55
E09	Meiosis, Mitosis, Circulatory System.	51	E30	Introducing the Oscilloscope, Electromagnetic Waves, Isotopes.	53
E10	Temperature Regulation, Chemistry of The Cell Part -I & Part II.	52	E31	Electromagnetic Waves Part-I & Part -II.	42
E11	Effect of Light on Oxygen Production, effect of Chlorophyll & Carbon Dioxide on Oxygen production & Starch Formation, Plants Make Food, Photosynthesis.	56	E32	Waves & Vibrations, Young & the Theory of Light, Principles of T.V.	54
E12	Circulation of the Heart, Respiratory, Reproductive & Nervous System.	50	E33	Velocity of Gamma Rays, Learning About Heat, Discovery of Radioactivity.	46
E13	Liver, Digestive System Part-I & Part -II, Lymphatic System.	54	E61	Steam & Steam Generation Time Measurement & Meaning.	51
E14	Tissue Respiration, How Plants Move, Coral Reef Community.	51	E62	Energy From the Sun, How it works.	41
E43	Growing Plants, Fungi & man, Fungi.	47	E63	Actions & reaction, Rotational Dynamics.	34
E48	Insects, Roots & Plants that help us.	44	E64	Fuels for the Future, How Machines help us.	47
E49	Genetic Investigation, Genetics & Plant Breeding, Pattern Developments.	43	E65	Rockets, Doppler Effect, Wave Particle Quality, Newtons II Law.	53
E50	Autumn Brings Changes, Spring Brings Changes, Flying Birds.	44	CHEMISTRY		
E51	Parasites, Microbiology: Microbes & their Control, Diffusion & Osmosis, Structure of Protein.	54	Code	Title	Time (in mins.)
E52	Autonomic Nervous System & Drugs.	35	E34	Atoms & Molecules (Properties of matter), Chromatography, Combustion.	47
E53	Life Cycle of a Frog, Skeleton, Skin as a Sense Organ, Egg & Sperm.	50	E35	Acids, Bases & Salts, Physics & Chemistry of Water.	41
E54	Sense Perception Part-I & Part-II	55	E36	What is Soap?, Sodium Family, Nitric Acid Compounds & Nitrogen Cycle.	48
E55	Introduction to Dissection, Work of Kidneys	42	E37	O for Oxygen, Strange case of Liquid Oxygen	44
E103	Human Brain Part-I: The Self	50	E38	Atomic Model & The Periodic Table.	44
E104	Human Brain Part-II: Language	50	E66	Crystallisation, Distillation.	49
E105	Human Brain Part-III: Fear	50	E67	Properties of Matter I & II.	46
E106	Human Brain Part-IV: Memory	50	E68	Properties of Matter III, IV & V.	55
E107	Human Brain Part-V: Seeing	50	E69	Basic Laboratory Techniques I.	54
E108	Human Brain Part-VI: Madness	50	E70	Basic Laboratory Techniques II.	60
			E71	Basic Laboratory Techniques III.	45
			E72	Preparation of Oxygen: Demonstration, Development of Electrochemistry, ABC of NPK, Facts about Fertiliser.	52
			E73	Vanadium: A Transistor Element, metals & Non- metals, Silicon & its Compounds.	57
				Diamonds a Metal working	42
			E94	Rutherford Model of An Atom	42

Teaching Learning Material for Medical & Nursing Institutions

MODELS, MANIKINS & SIMULATORS



IMPORTANT NURSING CHARTS



HUMAN PHYSIOLOGY CHARTS



OTHER MEDICAL CHARTS



BONES & LIGAMENT CHARTS

ORGAN & SYSTEM CHARTS

DISEASE & DISORDER CHARTS

For your requirements of items for Medical, please ask for our separate catalogue.

« OUR SHOWROOM AT DELHI »



89 YEARS OF DEDICATED & HONEST SERVICES



N. C. KANSIL & SONS

Head Office : Kansil Bhawan, 8606, Model Basti, New Delhi - 110005

Ph : +91-11-47202020 (30 lines) WhatsApp : +91-9310512020 email : nckmaps@gmail.com

Branch Office : 5299/1, Grain Market, Cross Road No. 4, Ambala Cantt - 133001

Web : www.nck-maps.com, www.nckansil.com

READY STOCKS – BEST QUALITY – COMPETITIVE RATES